

 **BOEING**
COMPONENT
MAINTENANCE MANUAL

TO: ALL HOLDERS OF LANDING GEAR BRAKE METERING VALVE MODULE ASSEMBLY COMPONENT
MAINTENANCE MANUAL 32-41-01

REVISION NO. 9 DATED JAN 01/93

HIGHLIGHTS

Pages which have been added or revised are outlined below together with the highlights of the revision. Remove and insert the affected pages as listed and enter Revision No. and date on the Record of Revision Sheet.

CHAPTER/SECTION

AND PAGE NO.

TITLE PAGE

1

TR & SB RECORD

1

1011-1012, 1015-1018,
1020-1024

DESCRIPTION OF CHANGE

Added module assemblies 257T2201-21 thru -24, which are the spares equivalents of the 250T1003-series modules as changed by SB 32-81, Rev. 1.

32-41-01

HIGHLIGHTS

01.1

Page 1

Jan 01/93

LANDING GEAR BRAKE METERING VALVE
MODULE ASSEMBLY

PART NUMBERS 257T2201-11,-14,-15,-16,
-21 THRU -24
250T1003-2,-3,-4,-5

COMPONENT MAINTENANCE MANUAL
WITH
ILLUSTRATED PARTS LIST

32-41-01

TITLE PAGE

Page 1

Jan 01/93

01.1

REVISION RECORD

- Retain this record in front of manual. On receipt of revision, insert revised pages in the manual, and enter revision number, date inserted and initial.

REVISION NUMBER	REVISION DATE	DATE FILED	BY	REVISION NUMBER	REVISION DATE	DATE FILED	BY

TEMPORARY REVISION AND SERVICE BULLETIN RECORD

BOEING SERVICE BULLETIN	BOEING TEMPORARY REVISION	OTHER DIRECTIVE	DATE OF INCORPORATION INTO MANUAL
<p>32-0081</p> <p>32-0081, Rev 1</p>		<p>PRR B10714</p> <p>PRR B10823</p> <p>PRR B11452-10R</p> <p>PRR B11857</p>	<p>APR 10/83</p> <p>APR 10/83</p> <p>OCT 01/89</p> <p>JAN 01/90</p> <p>JAN 01/93</p>

32-41-01

TR & SB RECORD

01.1

Page 1

Jan 01/93



BOEING
COMPONENT
MAINTENANCE MANUAL

PAGE	DATE	CODE	PAGE	DATE	CODE
32-41-01					
TITLE PAGE			REPAIR-GENERAL		
*1	JAN 01/93	01.1	601	OCT 01/89	01.1
2	BLANK		602	OCT 01/89	01.1
REVISION RECORD			REPAIR 1-1		
1	OCT 01/89	01.1	601	OCT 01/89	01.1
2	BLANK		602	OCT 01/89	01.1
TR & SB RECORD			603	OCT 01/89	01.1
*1	JAN 01/93	01.1	604	OCT 01/89	01.1
2	BLANK		605	OCT 01/89	01.1
LIST OF EFFECTIVE PAGES			606	BLANK	
*1	JAN 01/93	01	REPAIR 2-1		
THRU LAST PAGE			601	OCT 01/89	01.1
CONTENTS			602	BLANK	
1	OCT 01/89	01.1	REPAIR 3-1		
2	BLANK		601	OCT 01/89	01.1
INTRODUCTION			602	BLANK	
1	OCT 01/89	01.1	REPAIR 4-1		
2	BLANK		601	OCT 01/89	01.1
DESCRIPTION & OPERATION			602	OCT 01/89	01.1
1	OCT 01/89	01.1	REPAIR 5-1		
2	BLANK		601	OCT 01/89	01.1
DISASSEMBLY			602	OCT 01/89	01.1
301	OCT 01/89	01.1	REPAIR 6-1		
302	OCT 01/89	01.1	601	OCT 01/89	01.1
CLEANING			602	OCT 01/89	01.1
401	OCT 01/89	01.1	ASSEMBLY		
402	BLANK		701	OCT 01/89	01.1
CHECK			702	OCT 01/89	01.1
501	OCT 01/89	01.1	FITS AND CLEARANCES		
502	BLANK		801	OCT 01/89	01.1
			802	OCT 01/89	01.1
			803	APR 01/90	01.1
			804	BLANK	

* = REVISED, ADDED OR DELETED

32-41-01

EFFECTIVE PAGES
CONTINUED Page 1
01 Jan 01/93

PAGE	DATE	CODE	PAGE	DATE	CODE
ILLUSTRATED PARTS LIST					
1001	OCT 01/89	01.1			
1002	OCT 01/89	01.1			
1003	OCT 01/89	01.1			
1004	OCT 01/89	01.1			
1005	OCT 01/89	01.1			
1006	OCT 01/89	01.1			
1007	OCT 01/89	01.1			
1008	OCT 01/89	01.1			
1009	OCT 01/89	01.1			
1010	OCT 01/89	01.1			
*1011	JAN 01/93	01.1			
*1012	JAN 01/93	01.1			
*1013	JAN 01/93	01.101			
*1014	JAN 01/93	01.101			
*1015	JAN 01/93	01.1			
*1016	JAN 01/93	01.1			
*1017	JAN 01/93	01.1			
*1018	JAN 01/93	01.1			
*1019	JAN 01/93	01.101			
*1020	JAN 01/93	01.1			
*1021	JAN 01/93	01.1			
*1022	JAN 01/93	01.1			
*1023	JAN 01/93	01.1			
*1024	JAN 01/93	01.1			
*1025	JAN 01/93	01.101			
*1026	BLANK				

* = REVISED, ADDED OR DELETED

32-41-01

EFFECTIVE PAGES
 LAST PAGE Page 2
 01 Jan 01/93

TABLE OF CONTENTS

<u>Paragraph Title</u>	<u>Page</u>
Description and Operation.	1
Testing and Trouble Shooting (not applicable)	
Disassembly.	301
Cleaning	401
Check.	501
Repair	601
Assembly	701
Fits and Clearances.	801
Special Tools (not applicable)	
Illustrated Parts List	1001

INTRODUCTION

The instructions in this manual provide the information necessary to perform maintenance functions ranging from simple checks and replacement to complete shop-type repair.

This manual is divided into separate sections:

- | | |
|--|------------------------------|
| 1. Title Page | 4. List of Effective Pages |
| 2. Record of Revisions | 5. Table of Contents |
| 3. Temporary Revision &
Service Bulletin Record | 6. Introduction |
| | 7. Procedures & IPL Sections |

Refer to the Table of Contents for the page location of applicable sections. An asterisked flagnote *[] in place of the page number indicates that no special instructions are provided since the function can be performed using standard industry practices.

The beginning of the REPAIR section includes a list of the separate repairs, a list of applicable standard Boeing practices, and an explanation of the True Position Dimensioning symbols used.

An explanation of the use of the Illustrated Parts List is provided in the Introduction to that section.

All weights and measurements used in the manual are in English units, unless otherwise stated. When metric equivalents are given they will be in parentheses following the English units.

Design changes, optional parts, configuration differences and Service Bulletin modifications create alternate part numbers. These are identified in the Illustrated Parts List (IPL) by adding an alphabetical character to the basic item number. The resulting item number is called an alpha-variant. Throughout the manual, IPL basic item number references also apply to alpha-variants unless otherwise indicated.

Verification:

Disassembly
Assembly

32-41-01

INTRODUCTION

01.1

Page 1

Oct 01/89

LANDING GEAR BRAKE METERING VALVE MODULE ASSEMBLY

DESCRIPTION AND OPERATION

1. The landing gear brake metering valve module assembly consists of wheel brake actuator, housing, quadrant, lever crank, two connecting rods and two shafts on which quadrant, lever, and crank are splined. Rotation of the quadrant transmits movement through the rod and lever to the actuator and consequently to the brake metering valve which meters hydraulic fluid to the landing gear brake.

2. Leading Particulars (approximate)

Length -- 13 inches
Width -- 11 inches
Height -- 8 inches
Weight -- 6 pounds

32-41-01

DESCRIPTION & OPERATION

01.1

Page 1

Oct 01/89

DISASSEMBLY

1. Parts Replacement (IPL Fig. 1)

NOTE: The following parts are recommended for replacement. Unless otherwise specified, actual replacement may be based on in-service experience.

- A. Collar (340)
- B. Packings (55, 65)
- C. Cotter pins (140, 155)

2. Disassembly

- A. Remove all lockwires.
- B. Remove actuator assy (10) and attaching parts (15, 20, 25) from module assy (45).

NOTE: Refer to 32-41-25 for disassembly and repair of actuator assembly (10).

- C. Remove bolts (30), washers (35, 40) and separate module assy (45) from housing assy (345).
- D. Remove reducers (50, 60) and packings (55, 65) from module assy (45).
- E. Remove bolts (75), washers (85), nuts (90) and separate rod assy (95) from lever (170) and crank (260).
- F. Remove spring (600) and attaching parts (605 thru 655) from bracket assy (650) and housing assy (345).

NOTE: Do not disassemble rod assy unless necessary for repair or replacement (Refer to REPAIR 4-1).

- G. Remove cotter pins (140, 155), nuts (145, 160), washers (150, 165), Lever (170), spacer (175) from shaft (210).
- H. Remove retainer (180) and attaching parts (185, 190, 195) from housing assy (345). Remove bearings (200), spacer (205) and shaft (210) from housing assy.

32-41-01

DISASSEMBLY

01.1

Page 301

Oct 01/89

- I. Remove cotter pins (215, 230), nuts (220, 235), washer (225) and bushing (240) from shaft (320). Remove parts (245, 250, 255), from crank (260) and remove crank (260), and spacer (270) from shaft (320).
- J. Remove retainer (275) and attaching parts (280, 285, 290) from shaft (320) and housing assy (345), and remove bearings (295) from housing.
- K. Remove bolt (330), collar (340), washer (335) and bushing (325) from housing assy (345) and separate quadrant assy (300) and shaft (320) from housing assy (345).

NOTE: Do not remove rivets (305) and spacers (310) from quadrant assy (300) or disassemble housing assy (345), unless necessary for repair or replacement.

32-41-01

DISASSEMBLY

01.1

Page 302

Oct 01/89

CLEANING

1. Clean all parts except bearings (200, 295), using standard industry practices per 20-30-03.
2. Clean teflon sealed bearings (200, 295), according to manufacturer's instructions.

32-41-01

01.1
CLEANING
Page 401
Oct 01/89

CHECK

1. Check all parts for obvious defects in accordance with standard industry practices.
2. Magnetic particle check per 20-20-01 -- Lever (170), bushing (240), spring (600), shafts (210A, 320B).
3. Penetrant check per 20-20-02 -- Rod (130), crank (260), shafts (210, 320), quadrant (315), fittings (355, 375), spacer (435, 440).
4. Check Spring (600)
 - A. Extend spring to 8.25 inches and check that load is 22.5-27.5 lbs.
 - B. Extend spring to 8.67 inches and check that load is 26.78-32.78 lbs.

32-41-01

CHECK

01.1

Page 501

Oct 01/89

REPAIR – GENERAL

1. Content

A. Repair, refinish and replacement procedures are included in separate repair sections as follows:

<u>P/N</u>	<u>NAME</u>	<u>REPAIR</u>
257T2202	HOUSING ASSY	1-1
257T2212	QUADRANT	2-1
257T2225	LEVER	3-1
65B81787	ROD ASSY	4-1
65B81896	SHAFT	5-1
- - -	MISC PARTS REFINISH	6-1

2. Standard Practices

A. Refer to the following standard practices as applicable, for details of procedures in individual repairs.

- 20-41-01 Decoding Table for Boeing Finish Codes
- 20-42-05 Bright Cadmium Plating
- 20-43-01 Chromic Acid Anodizing
- 20-50-03 Bearing Installation and Retention

3. Materials

NOTE: Equivalent substitutes may be used.

- A. Primer -- BMS 10-11, Type 1 (Ref 20-60-02)
- B. Grease -- BMS 3-24 (20-60-03)
- C. Enamel -- BMS 10-11, Type 2 white gloss (Ref 20-60-00)
- D. Lubricant -- MIL-C-16173, grade 1 corrosion preventive compound (Ref 20-60-03)

32-41-01

REPAIR-GENERAL

01.1

Page 601

Oct 01/89

4. Dimensioning Symbols

A. Standard True Position Dimensioning Symbols used in applicable repair procedures are shown in Fig. 601.

—	STRAIGHTNESS	\oplus	THEORETICAL EXACT POSITION OF A FEATURE (TRUE POSITION)
\square	FLATNESS	\varnothing	DIAMETER
\perp	PERPENDICULARITY (OR SQUARENESS)	BASIC (BSC) OR	A THEORETICALLY EXACT DIMENSION USED TO DESCRIBE SIZE, SHAPE OR LOCATION OF A FEATURE FROM WHICH PERMISSIBLE VARIATIONS ARE ESTABLISHED BY TOLERANCES ON OTHER DIMENSIONS OR NOTES.
//	PARALLELISM	DIM	
\bigcirc	ROUNDNESS	-A-	DATUM
\bigcirc	CYLINDRICITY	\textcircled{M}	MAXIMUM MATERIAL CONDITION (MMC)
\frown	PROFILE OF A LINE	\textcircled{S}	REGARDLESS OF FEATURE SIZE (RFS)
\triangle	PROFILE OF A SURFACE	\textcircled{P}	PROJECTED TOLERANCE ZONE
\odot	CONCENTRICITY		
\equiv	SYMMETRY		
\sphericalangle	ANGULARITY		
\nearrow	RUNOUT		

EXAMPLES

$\text{—} \quad 0.002$	STRAIGHT WITHIN 0.002	$\textcircled{\odot} \text{ C } \varnothing \quad 0.0005$	CONCENTRIC TO C WITHIN 0.0005 DIAMETER (FULL INDICATOR MOVEMENT)
$\perp \text{ B } \quad 0.002$	PERPENDICULAR TO B WITHIN 0.002	$\equiv \text{ A } \quad 0.010$	SYMMETRICAL WITH A WITHIN 0.010
$\parallel \text{ A } \quad 0.002$	PARALLEL TO A WITHIN 0.002	$\sphericalangle \text{ A } \quad 0.005$	ANGULAR TOLERANCE 0.005 WITH A
$\bigcirc \quad 0.002$	ROUND WITHIN 0.002	$\oplus \text{ B } \varnothing \quad 0.002 \textcircled{S}$	LOCATED AT TRUE POSITION WITHIN 0.002 DIA IN RELATION TO DATUM B, REGARDLESS OF FEATURE SIZE
$\bigcirc \quad 0.010$	CYLINDRICAL SURFACE MUST LIE BETWEEN TWO CONCENTRIC CYLINDERS, ONE OF WHICH HAS A RADIUS 0.010 INCH GREATER THAN THE OTHER	$\perp \text{ A } \varnothing \quad 0.010 \textcircled{M}$ $0.510 \textcircled{P}$	AXIS IS TOTALLY WITHIN A CYLINDER OF 0.010-INCH DIAMETER, PERPENDICULAR TO, AND EXTENDING 0.510-INCH ABOVE, DATUM A, MAXIMUM MATERIAL CONDITION
$\frown \text{ A } \quad 0.006$	EACH LINE ELEMENT OF THE SURFACE AT ANY CROSS SECTION MUST LIE BETWEEN TWO PROFILE BOUNDARIES 0.006 INCH APART IN RELATION TO DATUM PLANE A	2.000	EXACT DIMENSION IS 2.000
$\triangle \text{ A } \quad 0.020$	SURFACES MUST LIE WITHIN PARALLEL BOUNDARIES 0.02 INCH APART AND EQUALLY DISPOSED ABOUT TRUE PROFILE	OR 2.000 BSC	

True Position Dimensioning Symbols
 Figure 601

32-41-01

REPAIR-GENERAL

01.1

Page 602

Oct 01/89

HOUSING ASSY - REPAIR 1-1

257T2202-13 THRU -20

NOTE: Refer to REPAIR-GEN for list of applicable standard practices. For repair of surfaces which may only require stripping and restoration of original finish, refer to Refinish instructions, Fig. 601.

1. Bearing Replacement (Fig. 601)

- A. Remove bearing (370, IPL Fig. 1) from fitting assy (355).
- B. Install new bearing with BMS 3-24 grease per 20-50-03.
- C. Roller swage per 20-50-03 and fillet seal both sides of bearing.

2. Parts Replacement (Fig. 601) (Items 355 thru 585)

NOTE: Limit disassembly of this unit to the removal of damaged parts only.

- A. Remove fasteners as applicable and remove damaged part.
- B. Using holes in existing parts as guides, drill holes, as shown, in replacement.
- C. Install fasteners to secure.

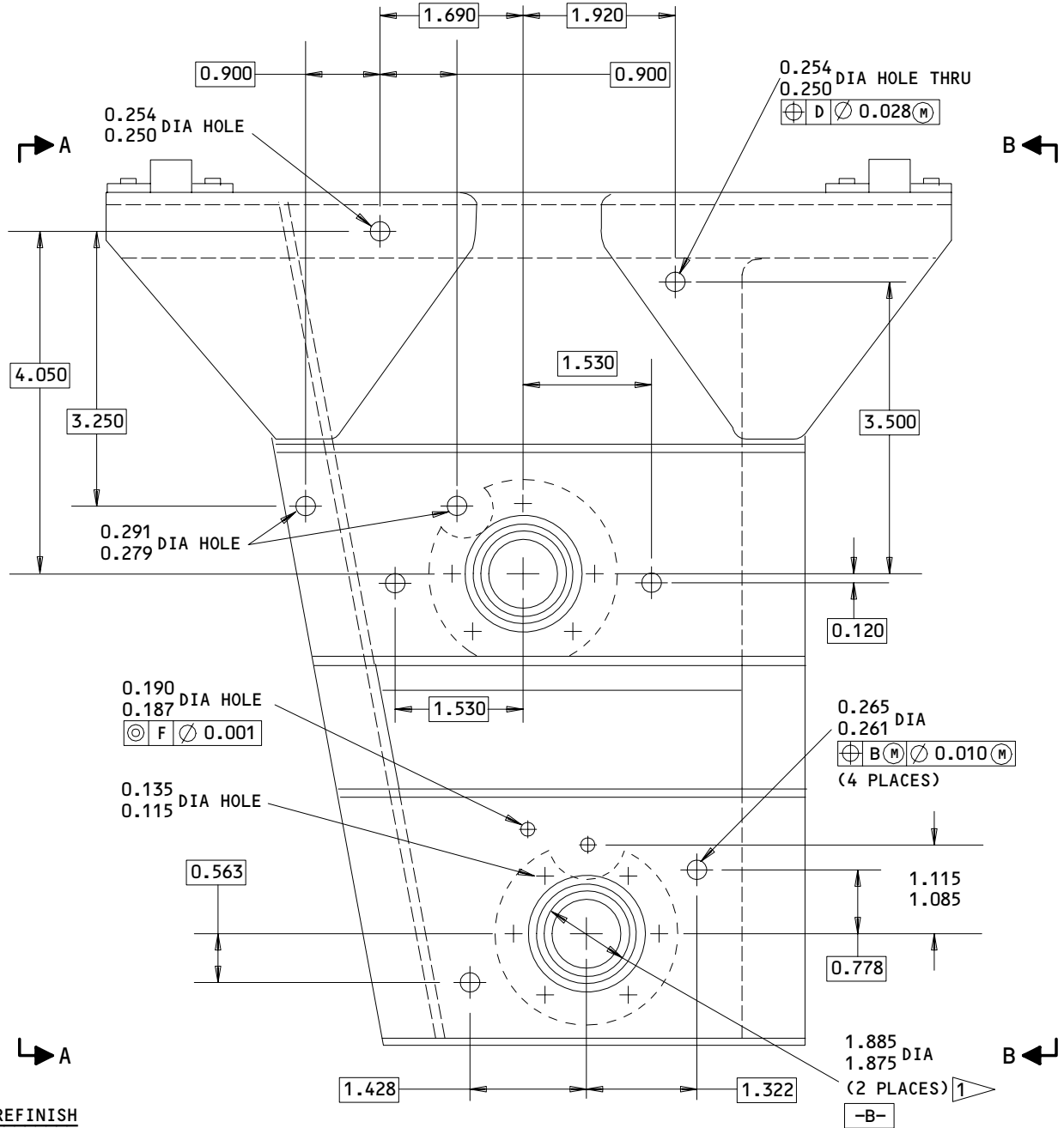
32-41-01

REPAIR 1-1

01.1

Page 601

Oct 01/89



REFINISH

HOUSING (510,560,565) -- CHROMIC ACID ANODIZE AND APPLY ONE COAT OF BMS 10-11 TYPE 1 PRIMER (F-18.13), EXCEPT AS NOTED BY 1

- 1 OMIT PRIMER ON THIS SURFACE
- 2 257T2202-17 ONLY
- 3 257T2202-18 ONLY
- 4 257T2202-13 THRU -16
- 5 257T2202-19 ONLY
- 6 257T2202-20 ONLY

ALL DIMENSIONS ARE IN INCHES

257T2202-13 THRU -20

Housing Assembly - Parts Replacement
 Figure 601 (Sheet 1)

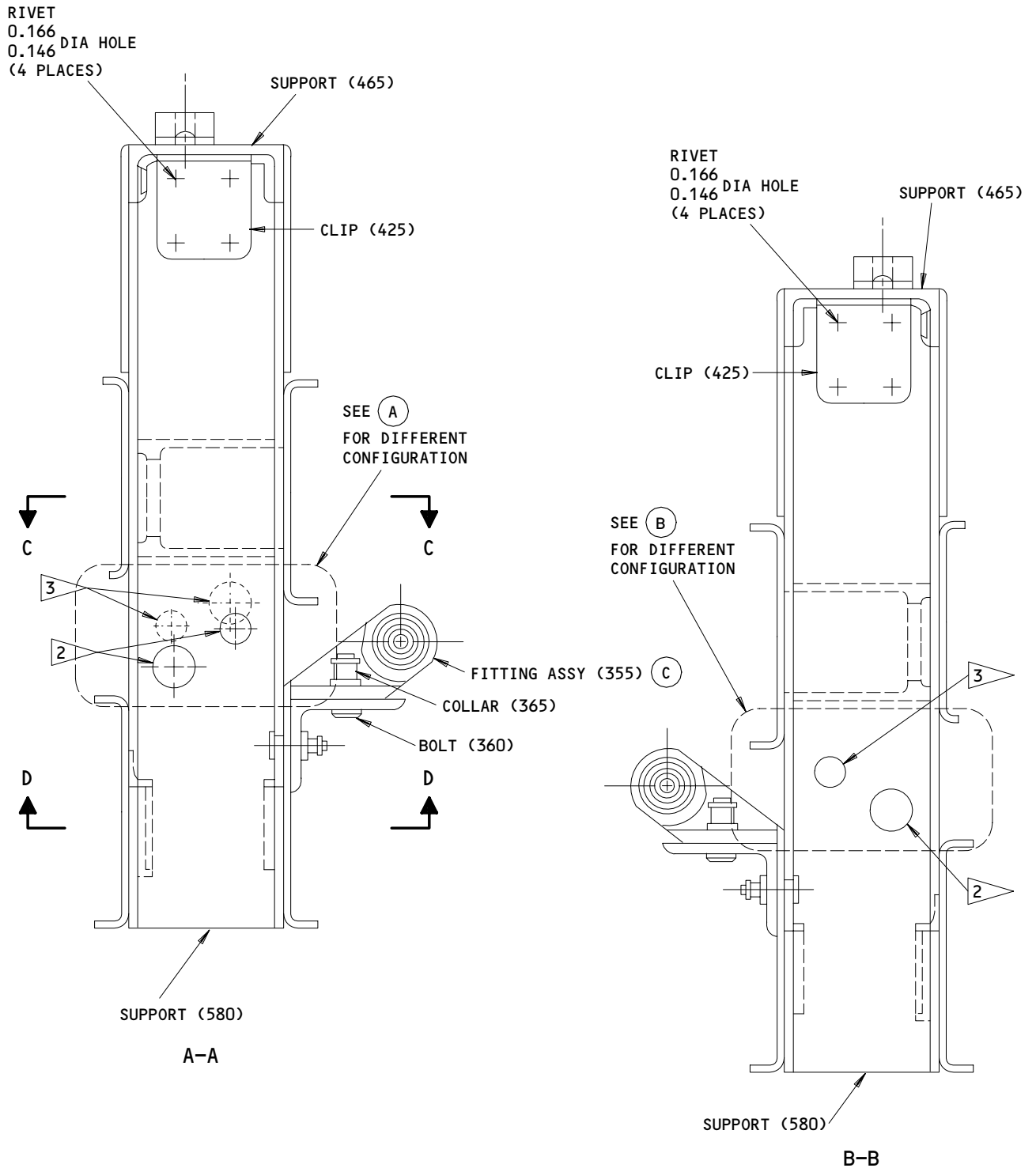
32-41-01

REPAIR 1-1

01.1

Page 602

Oct 01/89



257T2202-13 THRU -20

Housing Assembly - Parts Replacement
Figure 601 (Sheet 2)

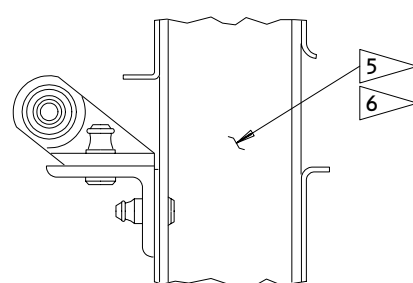
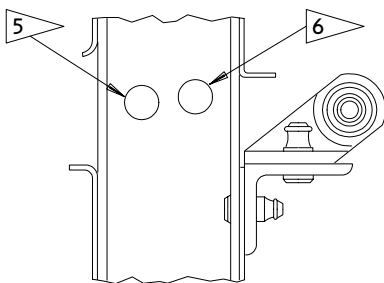
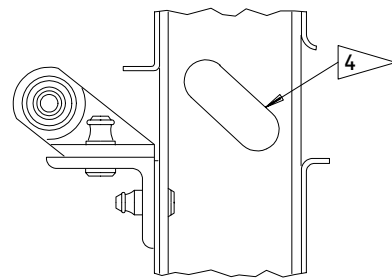
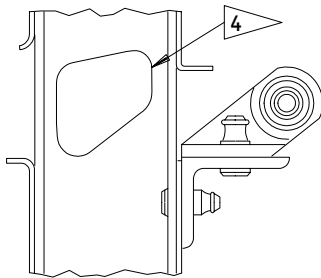
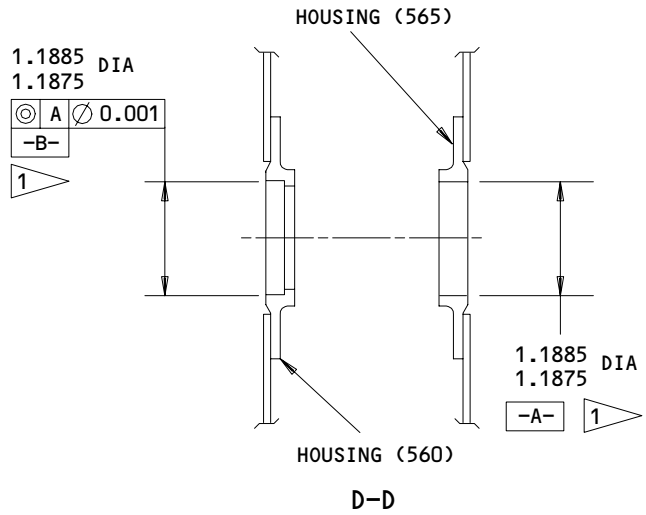
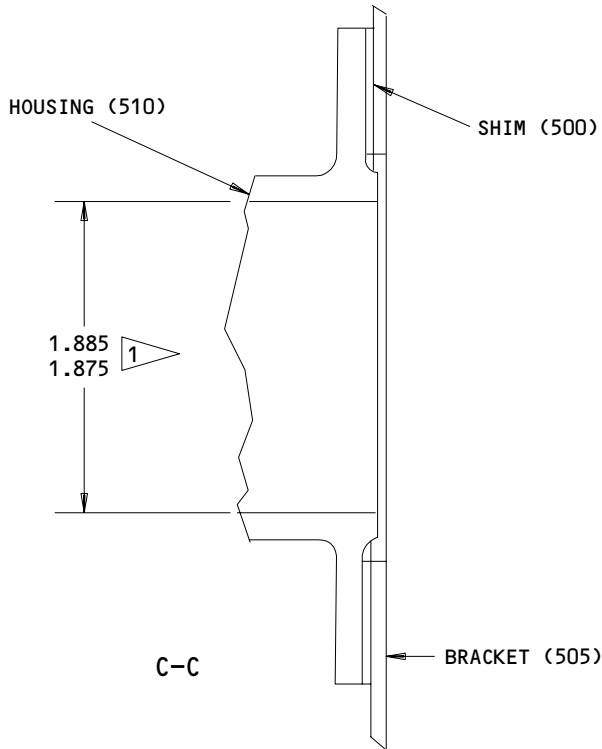
32-41-01

REPAIR 1-1

01.1

Page 603

Oct 01/89



(A)

(B)

257T2202-13 THRU -20
 Housing Assembly - Parts Replacement
 Figure 601 (Sheet 3)

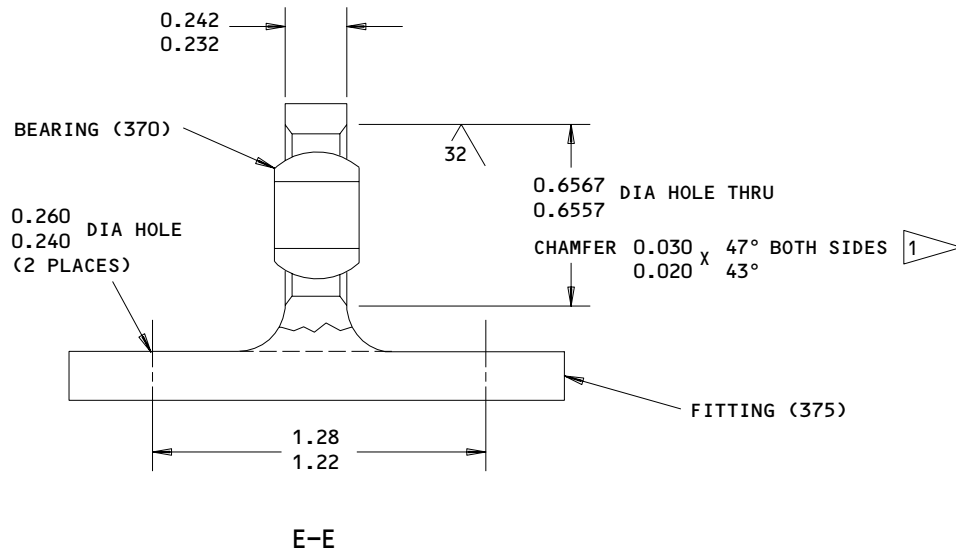
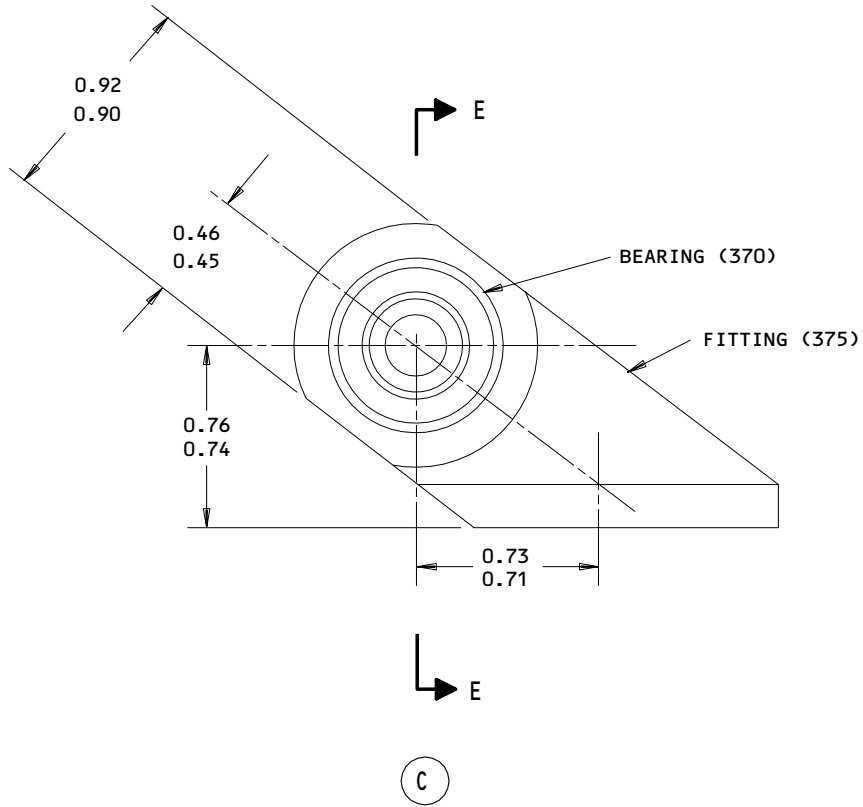
32-41-01

REPAIR 1-1

Page 604

Oct 01/89

01.1



ALL DIMENSIONS ARE IN INCHES

257T2202-13 THRU -20

Housing Assembly - Parts Replacement
Figure 601 (Sheet 4)

32-41-01

REPAIR 1-1

Page 605

Oct 01/89

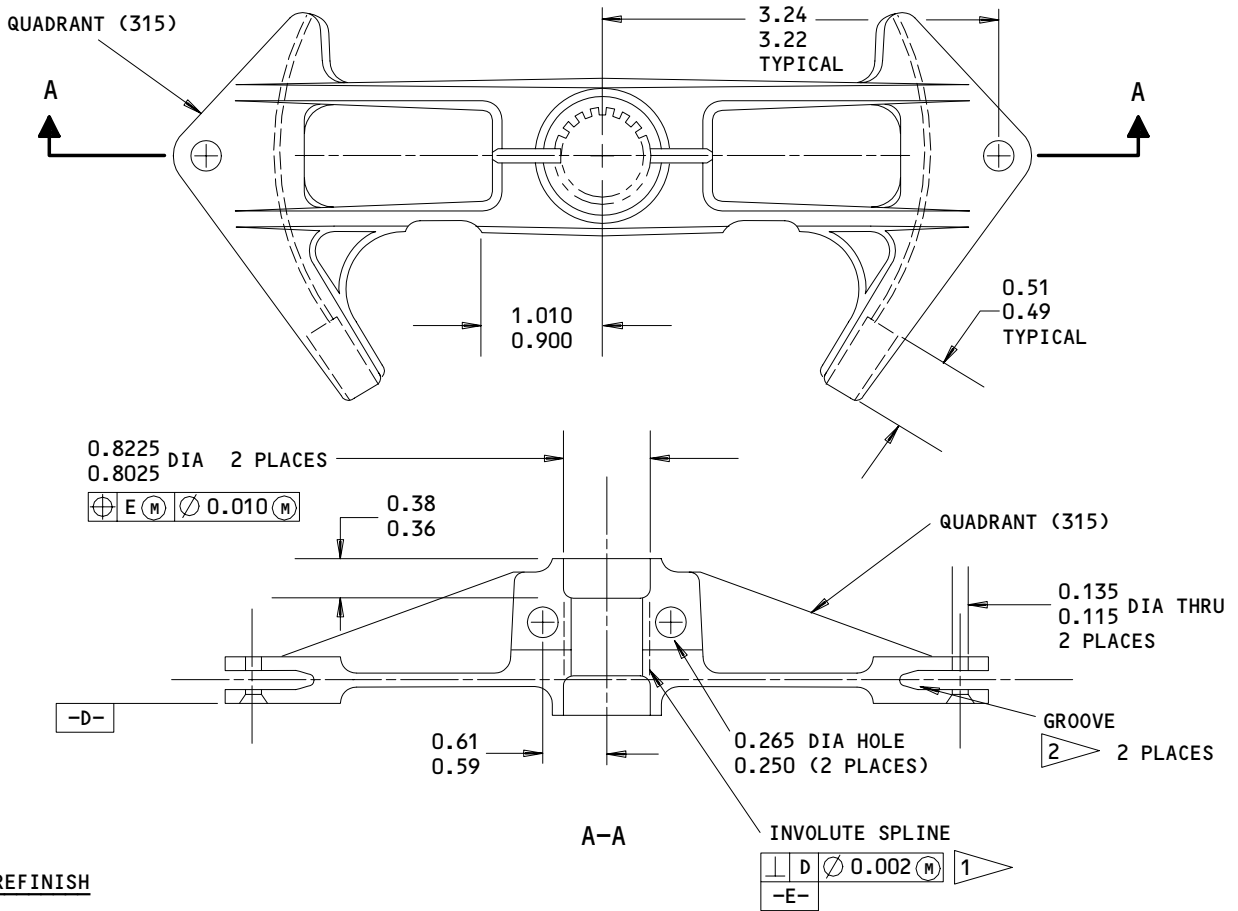
01.1

QUADRANT - REPAIR 2-1

257T2212-4

1. Plating Repair

NOTE: Repair consists of restoration of original finish. Refer to Refinish instructions, Fig. 601 and to REPAIR-GEN for list of applicable standard practices.



REFINISH

CHROMIC ACID ANODIZE AND APPLY ONE COAT OF BMS 10-11, TYPE 1 PRIMER (F-18.13) EXCEPT AS NOTED IN 1 2

- 1 OMIT PRIMER ON THIS SURFACE.
- 2 CHROMIC ACID ANODIZE (F-17.04) PLUS TWO COATS BMS 10-11, TYPE 1 PRIMER (F-20103) ON GROOVE ONLY.

MATERIAL: AL ALLOY

ALL DIMENSIONS ARE IN INCHES

Quadrant Refinish Details
Figure 601

32-41-01

REPAIR 2-1

Page 601

Oct 01/89

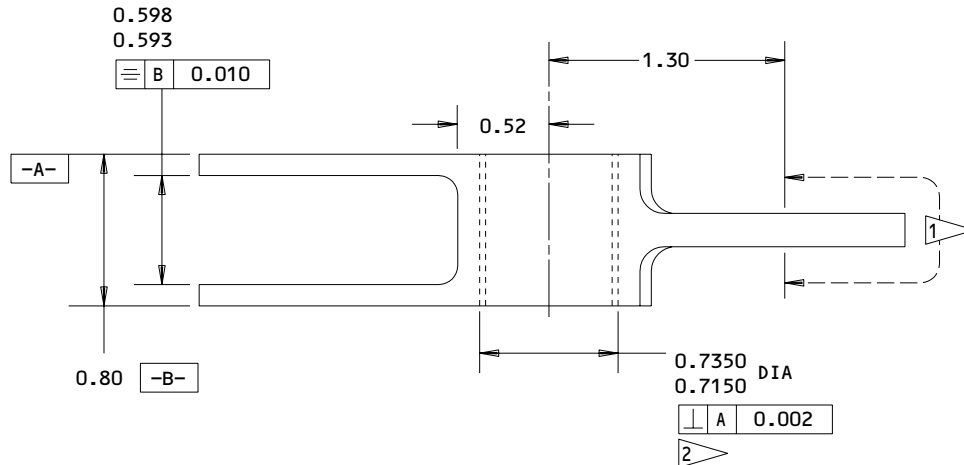
01.1

LEVER - REPAIR 3-1

257T2225-1

1. Plating Repair

NOTE: Repair consists of restoration of original finish. Refer to refinish instructions, Fig. 601 and to REPAIR-GEN for list of applicable standard practices.



REFINISH

CADMIUM-PLATE (F-15.06) ALL OVER EXCEPT NOTED ∇ 1. APPLY ONE COAT OF BMS 10-11, TYPE 1, PRIMER (F-20.02) EXCEPT NOTED ∇ 1 ∇ 2.

MATERIAL: 15-5PH CRES, 180-200 KSI
ALL DIMENSIONS ARE IN INCHES

- ∇ 1 APPLY BMS 3-8
- ∇ 2 F-19.13

257T2225-1
Lever Repair
Figure 601

81083

32-41-01

REPAIR 3-1

01.1

Page 601

Oct 01/89

ROD ASSY - REPAIR 4-1

69B81787-9

NOTE: Refer to REPAIR-GEN for list of applicable standard practices. For repair of surface which may only require restoration of original finish, refer to Refinish instructions, Fig. 601.

1. Bearing and Rod Replacement (Fig. 601)

- A. Remove lockwire.
- B. Loosen nut (110, 115 IPL Fig. 1) and locking devices (120, 125).
- C. Remove bearings (100, 105) from rod (130).
- D. Remove nut (110, 115) and locking devices (120, 125) from bearings (100, 105). Replaced damaged bearing.
- E. If rod (130) is being replaced, drill 0.06-0.08 inch dia. and 0.11-0.13 in. dia. hole as shown in Fig. 601.
- F. Apply thin coat of corrosion preventive compound on mating threads surface of bearings (100, 105), nuts (110, 115), rod (130) and locking devices (120, 125).
- G. Install locking devices (120, 125), nuts (110, 115) on bearings (100, 105). Install bearings into rod (100, 105) and adjust to 4.34-4.36 inches from bearings centerline. Tighten nut and install lockwire to nut and locking devices using double twist method.

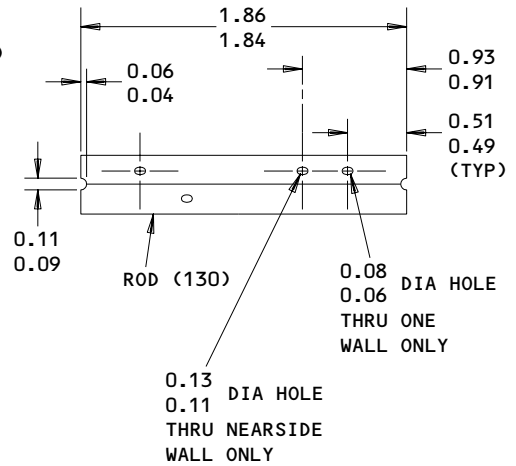
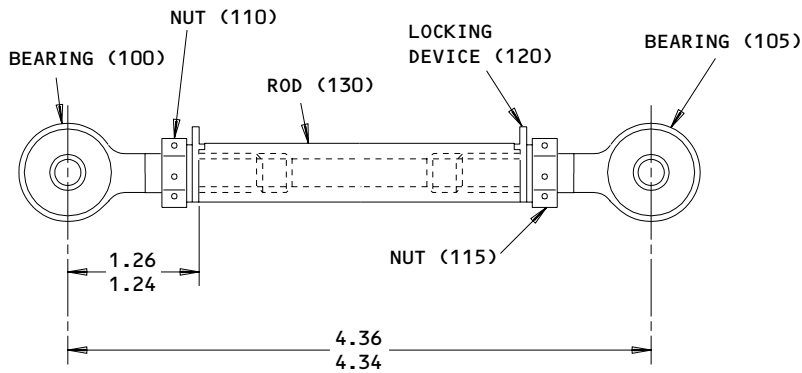
32-41-01

REPAIR 4-1

01.1

Page 601

Oct 01/89



REFINISH

ROD (130) -- CHROMIC ACID ANODIZE (F-17.01) AND APPLY GRADE 1 CORROSION PREVENTIVE COMPOUND (F-14.13) TO ALL ID BORE SURFACES. APPLY TWO COATS BMS 10-11, TYPE 1, PRIMER (F-18.05).

MATERIAL: AL ALLOY

ALL DIMENSIONS ARE IN INCHES

Rod Assembly Repair
 Figure 601

109626

32-41-01

REPAIR 4-1

01.1

Page 602

Oct 01/89

SHAFT - REPAIR 5-1

65B81896-2, -4, -5, -9

1. Plating Repair

NOTE: Repair consists of restoration of original finish. Refer to Refinish instructions, Fig. 601 and to REPAIR-GEN for list of applicable standard practices.

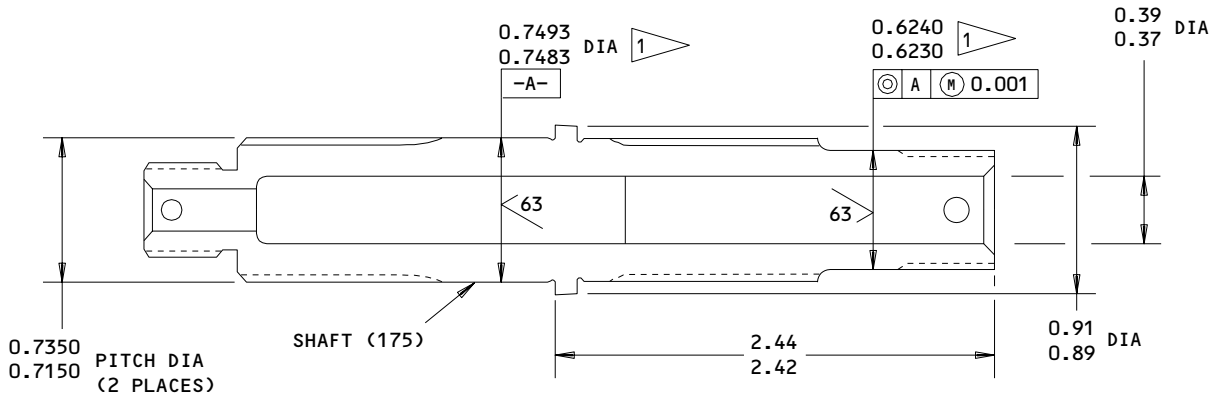
32-41-01

REPAIR 5-1

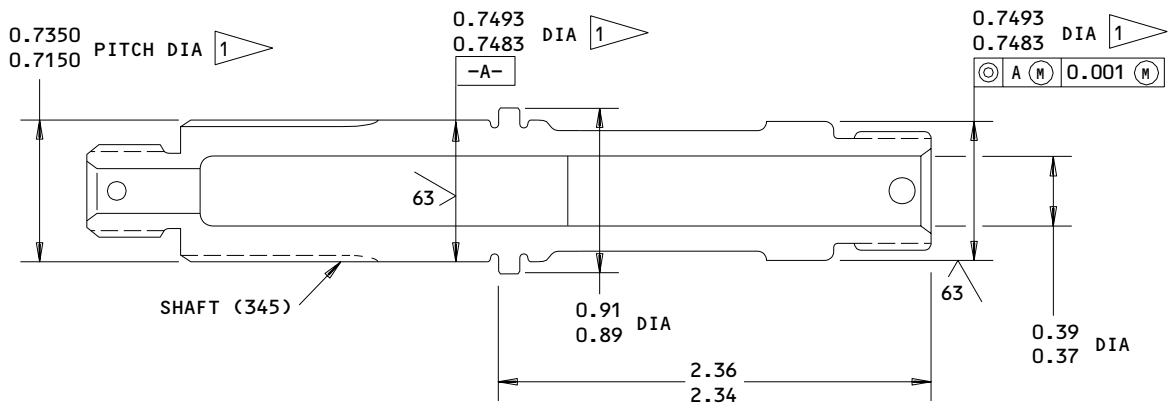
01.1

Page 601

Oct 01/89



65B81896-5,-9



65B81896-2,-4

REFINISH

65B81896-4,-5 -- CHROMIC ACID ANODIZE AND APPLY ONE COAT OF BMS 10-11 TYPE 1 PRIMER (F-18.13) EXCEPT ON SPLINES

65B81896-2,-9 -- CADMIUM PLATE (F-15.02) TO 0.0002-0.0004 INCH ALL OVER. APPLY TWO COATS BMS 10-11 TYPE 1 PRIMER (F-20.03) ON ID ONLY FOR 65B81896-2.

MATERIAL: 65B81896-2 -- 4340 STEEL, 180-200 KSI

65B81896-4,-5 -- 7075T7351 ALUM BAR

65B81896-9 -- 15-5 PH CRES, 180-200 KSI

ALL DIMENSIONS ARE IN INCHES

1 OMIT PRIMER

65B81896-2,-4,-5,-9

Shaft Repair
 Figure 601

32-41-01

REPAIR 5-1

01.1

Page 602

Oct 01/89

MISCELLANEOUS PARTS REFINISH – REPAIR 6-1

1. Repair of parts listed in Fig. 601 consists of restoration of the original finish.

IPL FIG. & ITEM	MATERIAL	FINISH
<u>Fig. 1</u>		
Bushing (645)	AL-Ni-Bronze	Cadmium plate and apply one coat of BMS 10-11, type 1, primer (F-16.01).
Retainer (180,275) Bracket (665)	Al alloy	Chemical treat and apply one coat BMS 10-11, type 1 primer (F-18.06), all over.
Crank (260)	Al alloy	Chromic acid anodize and apply one coat BMS 10-11 type 1 primer (F-18.13), except omit primer on spline surfaces.
Fitting (375)	Al alloy	Chromic acid anodize and apply one coat BMS 10-11 type 1 primer (F-18.13). Apply one coat BMS 10-60 white gloss enamel (SRF-14.9812). Except omit primer on bearing hole.
Support (395,400, 465,580,585)	Al alloy	Chromic acid anodize and apply one coat BMS 10-11 type 1 primer (F-18.13). Apply one coat BMS 10-11 type 2 white gloss enamel (F-21.03).
Bushing (240)	17-4 PH 180-200 ksi	Cadmimum plate (F-15.06).
Spacer (435, 440)	Al alloy	Chromic acid anodize and apply one coat BMS 10-11, type 1, primer (F-18.13).

Refinish Details
Figure 601 (Sheet 2)

32-41-01

REPAIR 6-1

01.1

Page 601

Oct 01/89

IPL FIG. & ITEM	MATERIAL	FINISH
<u>Fig. 1</u> Clip (420, 425), Bracket (485 or 485A, 505 or 505A 550 or 550A), Support (570,580)	Al alloy	Chemical treat and apply one coat BMS 10-11 type 1, primer (F-18.06). Followed by one coat of BMS 10-11, type 2, color BAC702, white gloss enamel (F-21.03).
Housing (510 or 510A,560,565)	Al alloy	Chromic acid anodize and apply one coat BMS 10-11, type 1, primer (F-18.13). Except chromic acid anodize (F-17.04) ID surface.
Support (570 thru 585B)	Al alloy	Chromic acid anodize and apply one coat BMS 10-11 type 1 primer (F-18.13). Apply one coat BMS 10-11, type 2, white gloss enamel (F-21.03).
Spring (600)	17-7 PH	Apply one coat of BMS 10-11, Type 1 primer.

Refinish Details
Figure 601 (Sheet 2)

32-41-01

REPAIR 6-1

01.1

Page 602

Oct 01/89

ASSEMBLY

1. Materials

NOTE: Equivalent substitutes may be used.

- A. Lockwire -- MS20995C32
- B. Assembly Lube -- Skydrol MCS 352 (Ref 20-60-03)
- C. Grease -- BMS 3-24 (20-50-03)

2. Lubrication

- A. Lubricate fittings (50, 60) and o-rings (55, 65) with assembly lube.
- B. Apply thin layer of grease to shaft (320) shank surface prior to assembly.
- C. Lubricate bearings (200, 295) with grease prior to assembly.

3. Assembly (IPL Fig. 1)

NOTE: Tighten all 0.25 in dia nuts and bolts to 30-50 lb-in.

- A. Install quadrant assy (300), shaft (320), bolt (330), bushing (325), washer (335) and collar (340) in housing assy (345).
- B. Install bearings (295) in housing assy (345). Install retainer (275) and attaching parts (280, 285, 290) on housing (345) and shaft (320). Install spacer (270), crank (260) on shaft.
- C. Install washer (225), bushing (240) and nuts (220, 235) on shaft (320). Tighten nuts to 100-110 lb-in and install cotter pins (215, 230). Install bolt (245), washer (250), nut (255) to secure crank (260).
- D. Install bracket assy (650) and attaching parts (298, 299) into quadrant assy (300). Tighten bolt (298) to 50-80 lb-in.
- E. Install shaft (210), spacer (205), bearings (200), retainer (180) and attaching parts (185, 190, 195) in housing (345).
- F. Install spacer (175), lever (170), washers (150, 165) and nuts (145, 160) on shaft (210). Tighten nuts to 100-110 lb-in and install cotter pins (140, 155).

32-41-01

ASSEMBLY
Page 701
Oct 01/89

- G. Install spring (600) and attaching parts (605 thru 655) in bracket (650) and housing (345).
- H. Install rod assy (95) on lever (170) and crank (260) and install bolts (75, 80), washers (85), stop (135) and nuts (90).
- I. Install reducers (50, 60) and packings (55, 65) on valve assy (70).
- J. Install module assy (45) bolts (30) and washers (35) on housing assy (345).
- K. Install actuator assy (10) and attaching parts (15, 20, 25) on module (45), with arm of lever (170) positioned in slot on actuator assy (10).

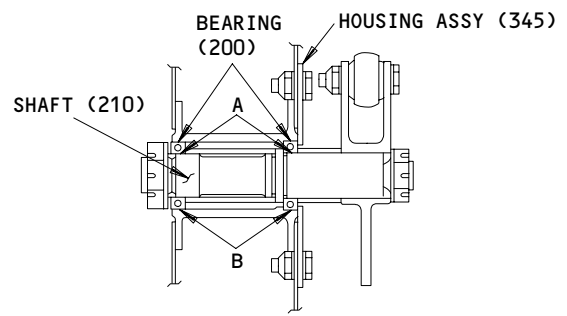
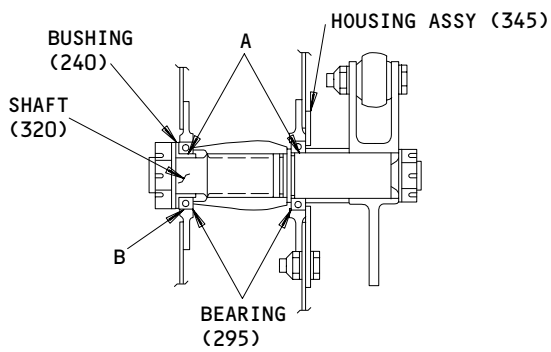
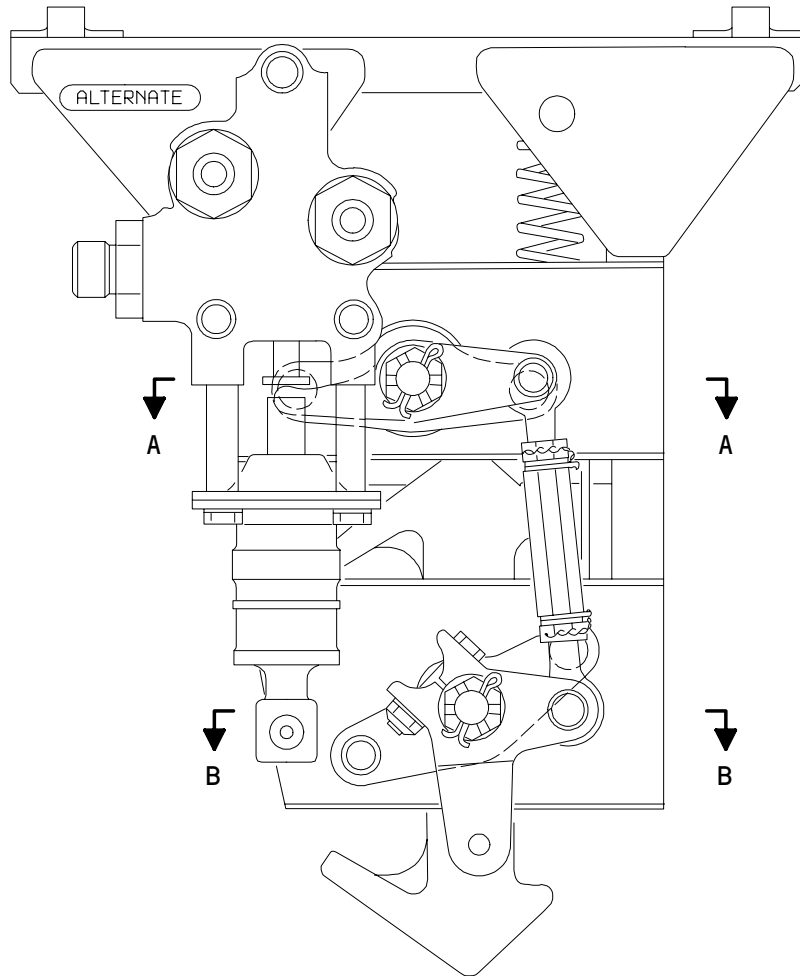
32-41-01

ASSEMBLY

01.1

Page 702

Oct 01/89



Fits and Clearances
Figure 801 (Sheet 1)

32-41-01

FITS AND CLEARANCES
01.1 Page 801
Oct 01/89

Ref Letter Fig.801	Mating Item No. IPL Fig.	Design Dimension				Service Wear Limit		
		Dimension		Assembly Clearance		Dimension		Maximum Clearance
		Min	Max	Min	Max	Min	Max	
A	ID 200,295	0.7493	0.7507	0.000	0.0024	0.7466	0.7534	0.0041
	OD 210,240	0.7483	0.7493					
B	ID 345	1.1875	1.1885	0.000	0.002	1.1843	1.1917	0.0042
	OD 200,295	1.1865	1.1875					
C	ID 240	0.6245	0.6255	0.0005	0.0025	0.6214	0.6281	0.0041
	OD 320	0.6230	0.6240					

Fits and Clearances
 Figure 801 (Sheet 2)

32-41-01

FITS AND CLEARANCES
 01.1 Page 802
 Oct 01/89

FOR TORQUE VALUES OF STANDARD FASTENERS, REFER TO 20-50-01			
ITEM NO. IPL FIG. 1	NAME	TORQUE	
		POUND-INCHES	POUND-FEET
110,115,145,160,220,235	NUT	100-110	

Torque Table
Figure 802

32-41-01

FITS AND CLEARANCES
01.1 Page 803
Apr 01/90

ILLUSTRATED PARTS LIST

1. This section lists and illustrates replaceable or repairable component parts. The Illustrated Parts Catalog contains a complete explanation of the Boeing part numbering system.

2. Indentures show parts relationships as follows:

Assembly

Detail Parts for Assembly

Subassembly

Attaching Parts for Subassembly

Detail Parts for Subassembly

Detail Installation Parts (Included only if installation parts may be returned to shop as part of assembly)

3. One use code letter (A, B, C, etc.) is assigned in the EFF CODE column for each variation of top assembly. All listed parts are used on all top assemblies except when limitations are shown by use code letter opposite individual part entries.

4. Letter suffixes (alpha-variants) are added to item numbers for optional parts, Service Bulletin modification parts, configuration differences (except left- and right-hand parts), product improvement parts, and parts added between two sequential item numbers. The alpha-variant is not shown on illustrations when appearance and location of all variants of the part is the same.

5. Service Bulletin modifications are shown by the notations PRE SB XXXX and POST SB XXXX.

A. When a new top assembly part number is assigned by Service Bulletin, the notations appear at the top assembly level only. The configuration differences at detail part level are then shown by use code letter.

B. When the top assembly part number is not changed by the Service Bulletin, the notations appear at the detail part level.

6. Parts Interchangeability

Optional
(OPT)

The parts are optional to and interchangeable with other parts having the same item number.

Supersedes, Superseded By
(SUPSDS, SUPSD BY)

The part supersedes and is not interchangeable with the original part.

Replaces, Replaced By
(REPLS, REPLD BY)

The part replaces and is interchangeable with, or is an alternate to, the original part.

32-41-01

VENDORS

S4802 KAYABA INDUSTRY CO LTD
1805-1 ASAMIZODAI
SAGAMIHARA, KANAGAWA PREF 228, JAPAN

01673 AIRDROME PARTS CO
3251 AIRPORT WAY
LONG BEACH, CALIFORNIA 90806

06710 VALLEY-TODECO INCORPORATED
12975 BRADLEY AVENUE
SYLMAR, CALIFORNIA 91342

06725 AIR INDUSTRIES CORPORATION
12570 KNOTT STREET
GARDEN GROVE, CALIFORNIA 92641

06950 VSI CORP SCREWCORP DIV
13001 EAST TEMPLE AVENUE
CITY OF INDUSTRY, CALIFORNIA 91746

08524 DEUTSCH FASTENER CORPORATION
PO BOX 92925 7001 WEST IMPERIAL HIGHWAY
LOS ANGELES, CALIFORNIA 90045

10630 ANILLO INDUSTRIES, INCORPORATED
2090 NORTH GLASSELL
ORANGE, CALIFORNIA 92667

11328 TELEDYNE LINAIR ENGINEERING
651 WEST KNOX STREET
GARDENA, CALIFORNIA 90248

11815 TOWNSEND DIV OF TEXTRON INC CHERRY FASTENER UNIT
BOX 2157 1224 EAST WARNER AVENUE
SANTA ANA, CALIFORNIA 92707

14397 FABER ENTERPRISES, INCORPORATED
6606 VARIEL AVE
CANOGA PARK, CALIFORNIA 91303

14798 DEUTSCH CO METAL COMPONENTS DIV
14800 SOUTH FIGUEROA STREET
GARDENA, CALIFORNIA 90061

15653 KAYNAR MFG COMPANY INC KAYLOCK DIV
PO BOX 3001 800 SOUTH STATE COLLEGE BLVD
FULLERTON, CALIFORNIA 92634

32-41-01

ILLUSTRATED PARTS LIST
01.1 Page 1002
Oct 01/89

VENDORS

15860 NEW HAMPSHIRE BALL BEARINGS, INCORPORATED ASTRO DIVISION
155 LEXINGTON AVENUE
LACONIA, NEW HAMPSHIRE 03246

17943 FEDERAL MANUFACTURING CORPORATION
6910 FARMDALE AVENUE
NORTH HOLLYWOOD, CALIFORNIA 91605

21335 TEXTRON INC FAFNIR BEARING DIVISION
37 BOOTH STREET
NEW BRITAIN, CONNECTICUT 06050

27624 PAUL R BRILES INC P.B. FASTENER DIV
1700 WEST 132ND STREET PO BOX 1157
GARDENA, CALIFORNIA 90249

30163 DAYRON CORP
333 MAGUIRE BLVD PO BOX 20394
ORLANDO, FLORIDA 32814

30974 AEROFIT PRODUCTS INC
8531 WHITAKER STREET
BUENA PARK, CALIFORNIA 90621

38443 TRW INC BEARING DIV
402 CHANDLER STREET
JAMESTOWN, NEW YORK 14701

43991 FAG BEARING INCORPORATED
HAMILTON AVENUE
STAMFORD, CONNECTICUT 06904

50294 NMB INC
9730 INDEPENDENCE AVENUE
CHATSWORTH, CALIFORNIA 91311

50632 KAMATICS CORP SUB OF KAMAN CORP
1335 BLUE HILLS ROAD
BLOOMFIELD, CONNECTICUT 06002

50948 PARKER-HANNIFIN CORP HUNTSVILLE AIRCRAFT FACILITY
9400 SOUTH MEMORIAL PARKWAY
HUNTSVILLE, ALABAMA 35802

52828 REPUBLIC FASTENER MFG CORP
1300 RANCHO CONEJO BLVD
NEWBURY PARK, CALIFORNIA 91320

32-41-01

ILLUSTRATED PARTS LIST
01.1 Page 1003
Oct 01/89

VENDORS

56878 SPS TECHNOLOGIES INC
HIGHLAND AVENUE
JENKINTOWN, PENNSYLVANIA 19046

71087 BOOTS ACFT NUT DIV TOWNSEND CO SEE TEXTRON INC CHERRY
FASTENER TOWNSEND DIV V11815

72962 AMERACE CORP ESNA DIV
2330 VAUXHALL ROAD
UNION, NEW JERSEY 07083

73134 HEIM DIV INCOM INTERNATIONAL INC
60 ROUND HILL ROAD
FAIRFIELD, CONNETICUT 06430

73197 HI-SHEAR CORPORATION
2600 SKYPARK DRIVE
TORRANCE, CALIFORNIA 90509

80539 SPS TECHNOLOGIES INC AEROSPACE PRODUCTS DIV
2701 SOUTH HARBOR BOULEVARD PO BOX 1259
SANTA ANA, CALIFORNIA 92702

92215 VOI-SHAN DIV OF VSI CORP
8463 HIGUERA STREET
CULVER CITY, CALIFORNIA 90230

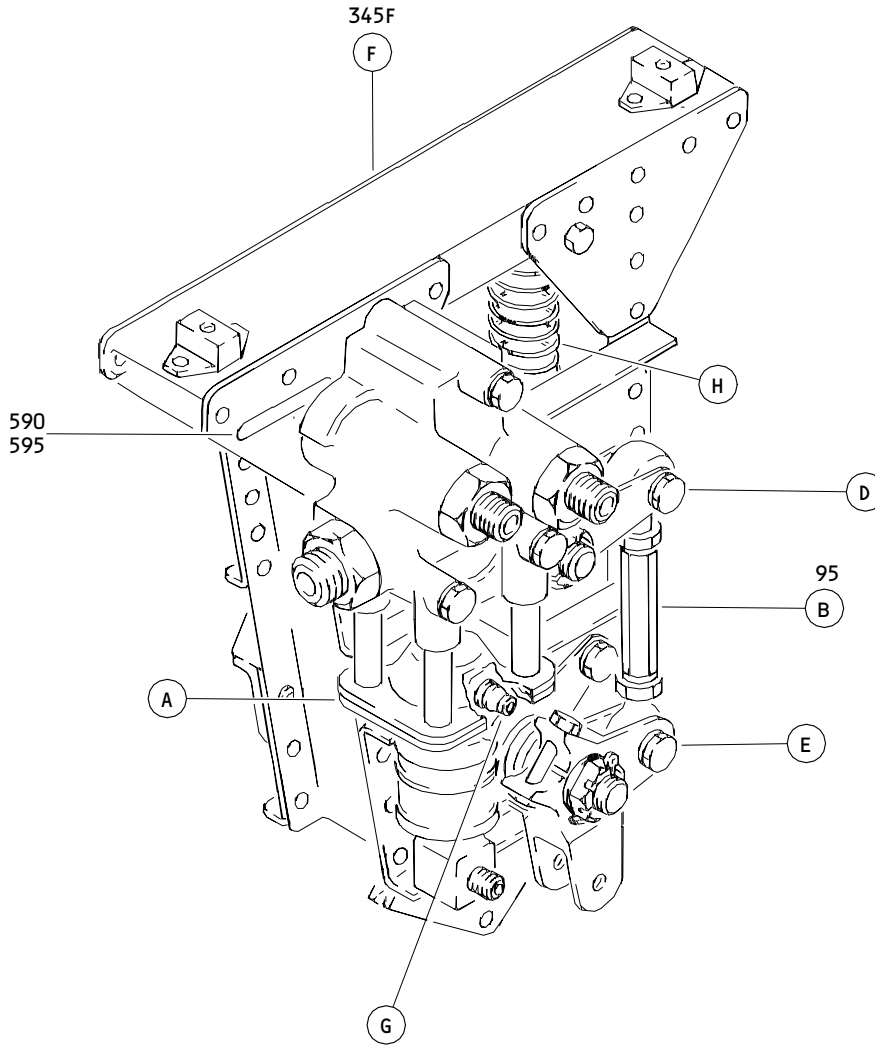
92595 AUTOMATIC SCREW MACHINE PRODUCTS CO
PO BOX 1608 709 2ND AVENUE SE
DECATUR, ALABAMA 35602

97613 SARGENT INDUSTRIES KAHR BEARING DIVISION
3010 NORTH SAN FERNANDO ROAD
BURBANK, CALIFORNIA 91503

97928 LITTON FASTENING SYSTEMS DIV OF LITTON SYSTEMS INC
3969 PARAMONT BOULEVARD
LAKEWOOD, CALIFORNIA 90712

32-41-01

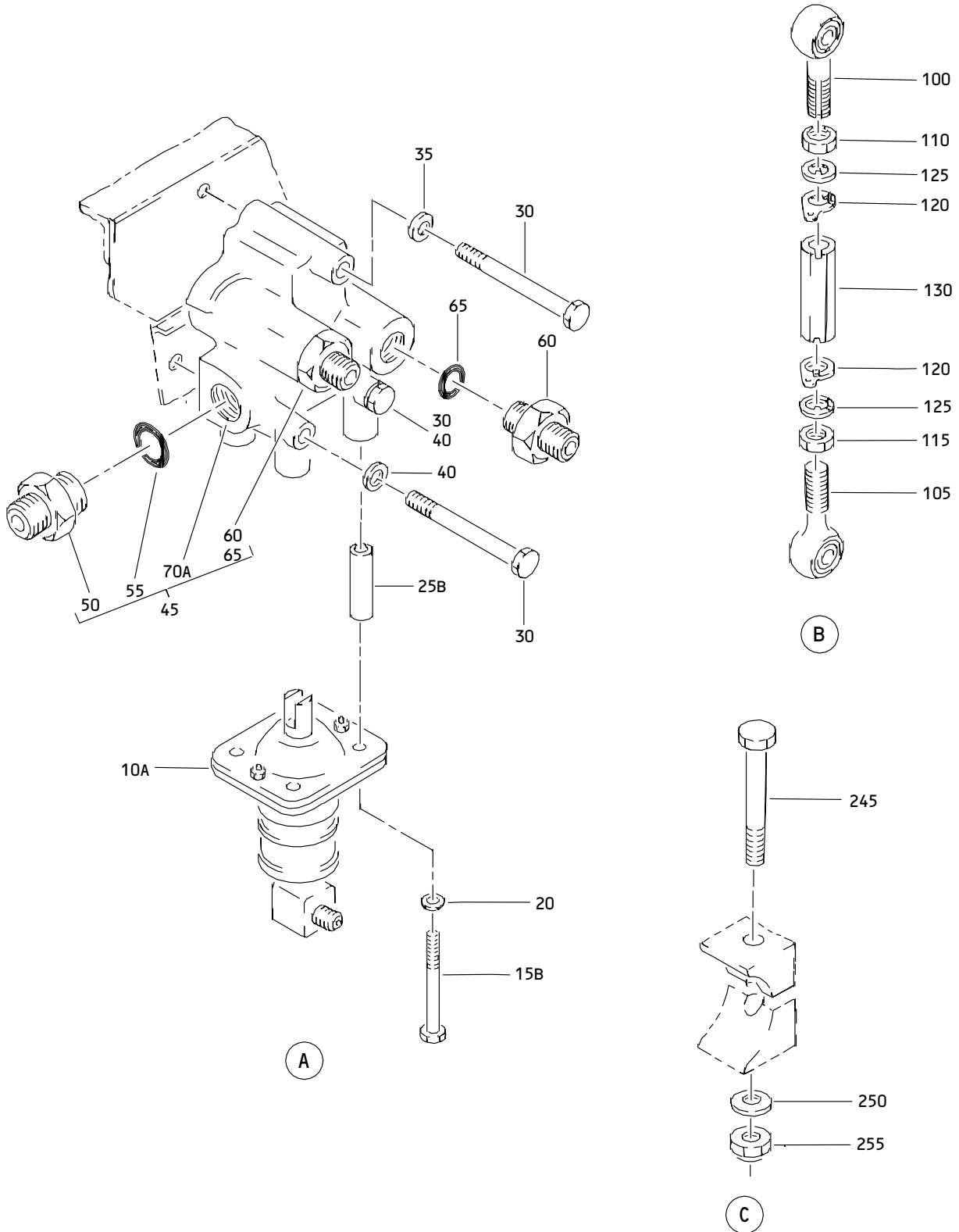
ILLUSTRATED PARTS LIST
01.1 Page 1004
Oct 01/89



Landing Gear Brake Metering Valve Module Assembly
Figure 1 (Sheet 1)

32-41-01

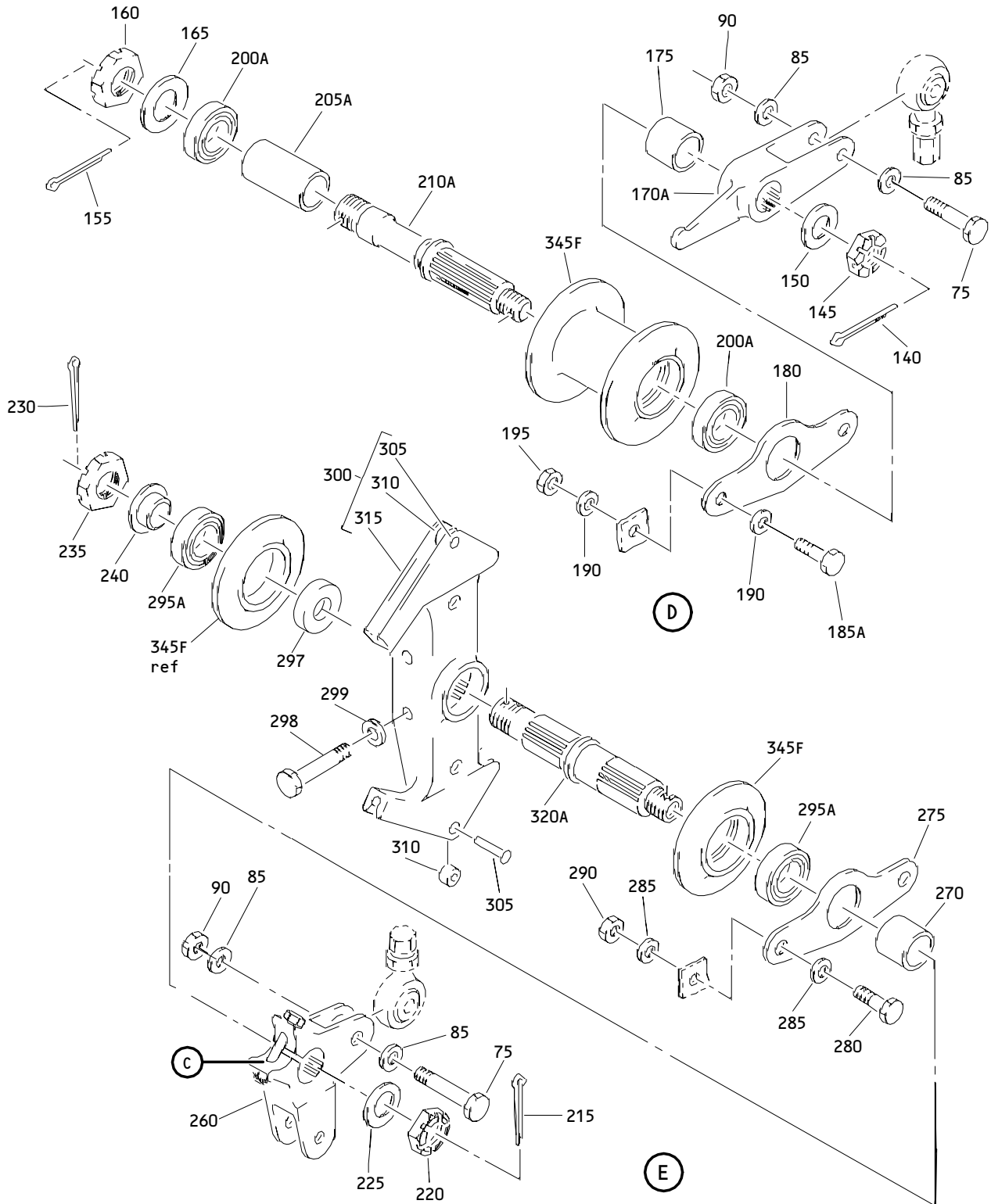
ILLUSTRATED PARTS LIST
01.1 Page 1005
Oct 01/89



Landing Gear Brake Metering Valve Module Assembly
 Figure 1 (Sheet 2)

32-41-01

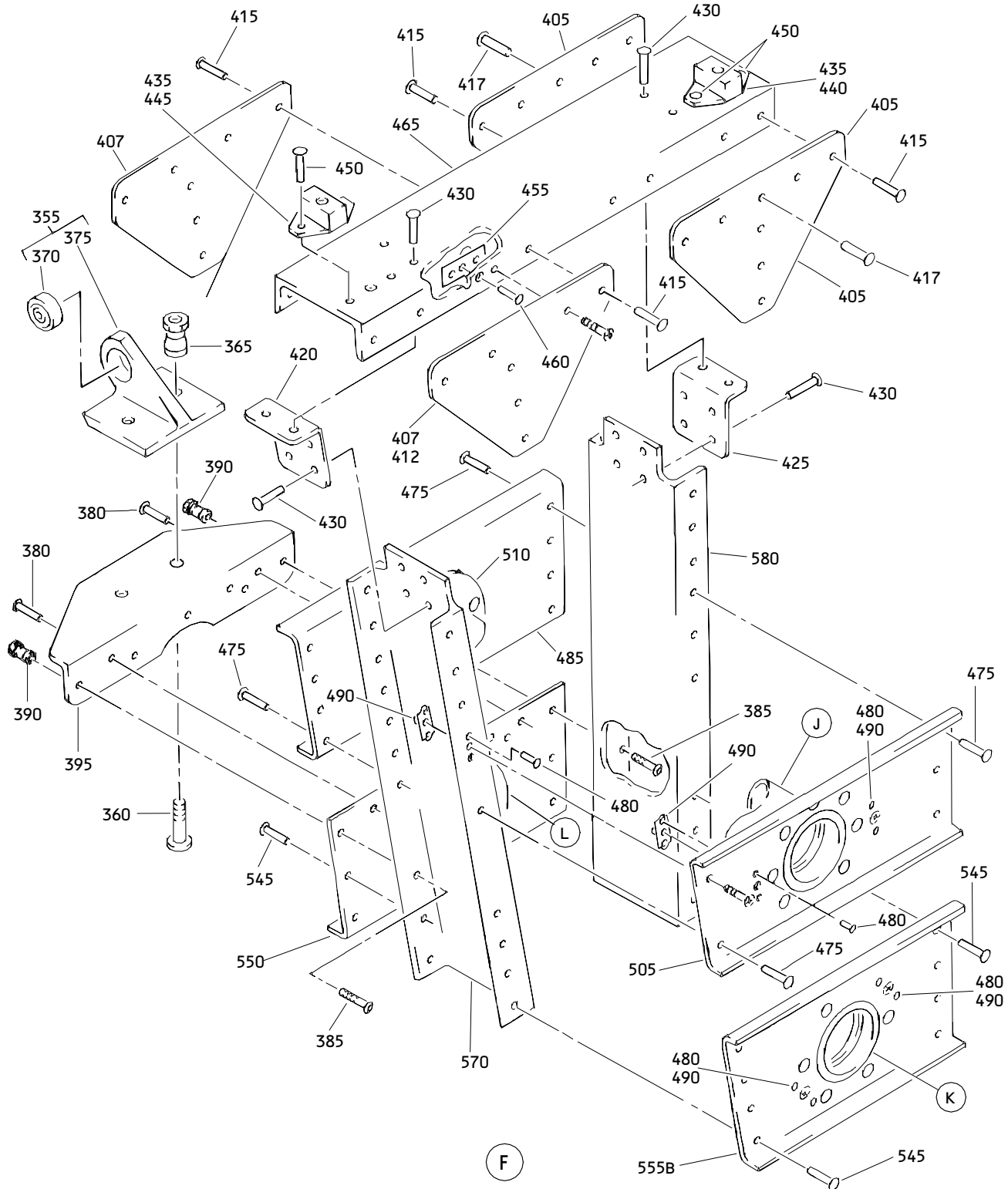
ILLUSTRATED PARTS LIST
 01.1 Page 1006
 Oct 01/89



Landing Gear Brake Metering Valve Module Assembly
Figure 1 (Sheet 3)

32-41-01

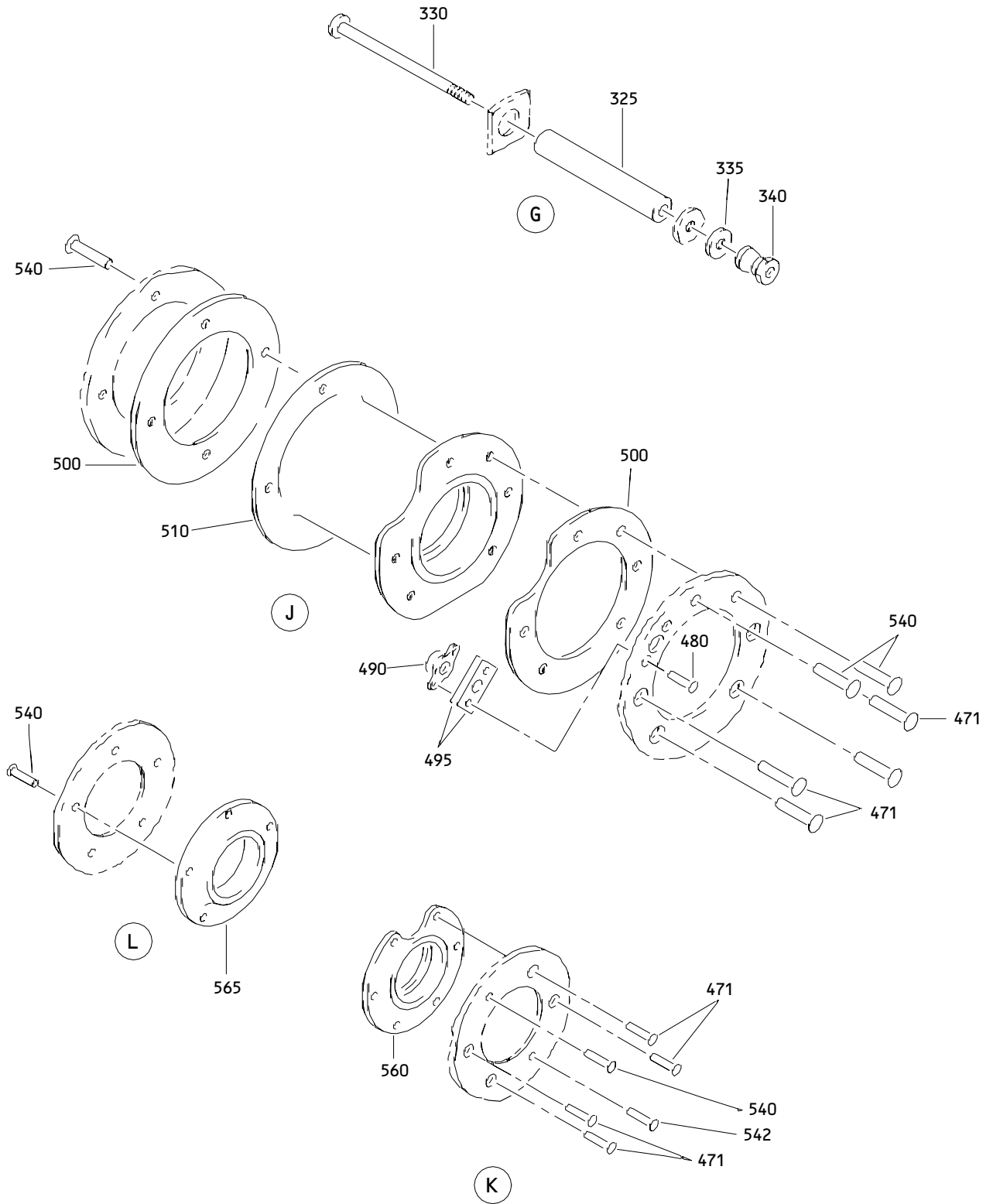
ILLUSTRATED PARTS LIST
01.1 Page 1007
Oct 01/89



Landing Gear Brake Metering Valve Module Assembly
 Figure 1 (Sheet 4)

32-41-01

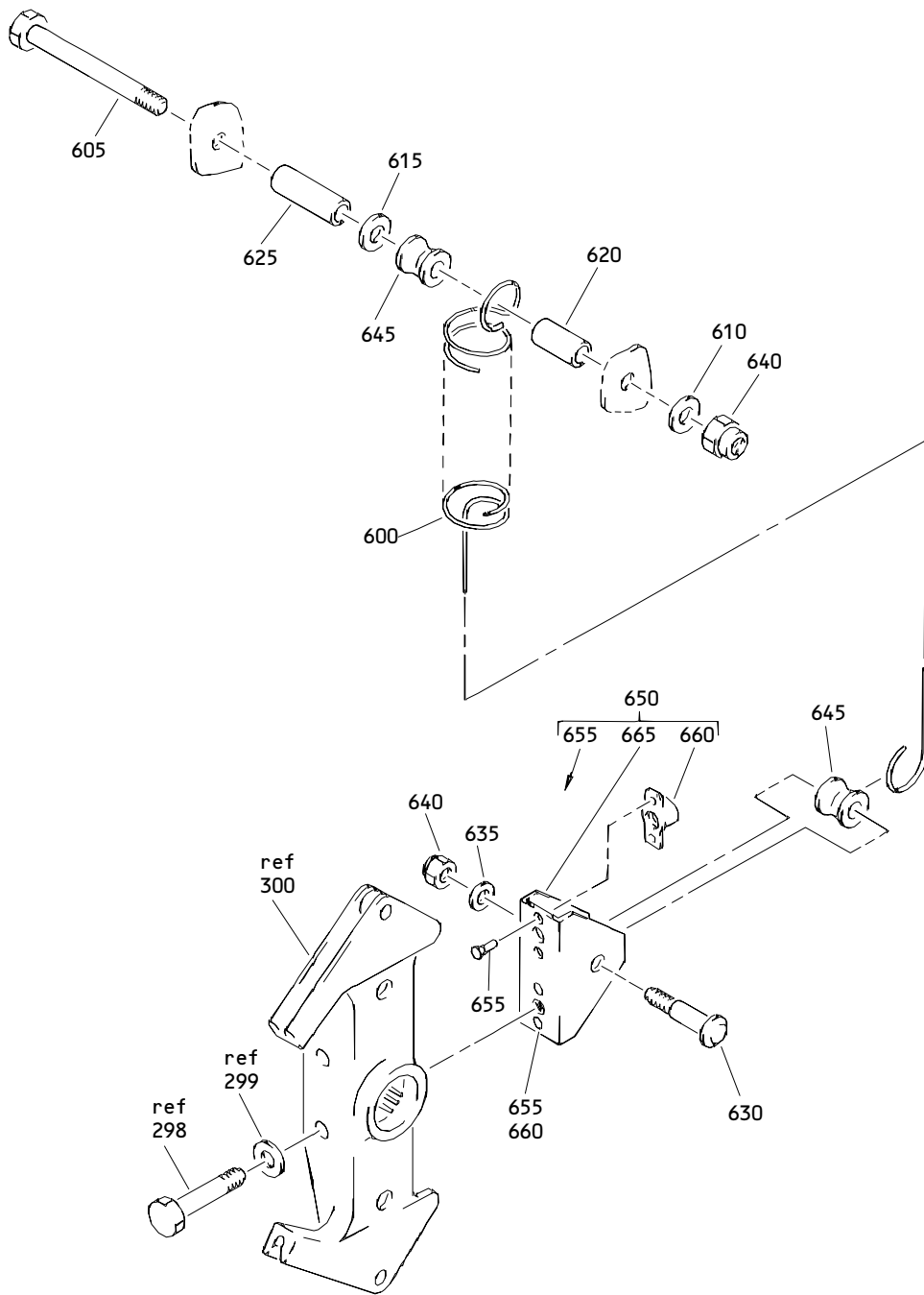
ILLUSTRATED PARTS LIST
 01.1 Page 1008
 Oct 01/89



Landing Gear Brake Metering Valve Module Assembly
Figure 1 (Sheet 5)

32-41-01

ILLUSTRATED PARTS LIST
01.1 Page 1009
Oct 01/89



(H)

Landing Gear Brake Metering Valve Module Assembly
 Figure 1 (Sheet 6)

32-41-01

ILLUSTRATED PARTS LIST
 01.1 Page 1010
 Oct 01/89

BOEING
COMPONENT
MAINTENANCE MANUAL

FIG. & ITEM	PART NO.	AIRLINE PART NUMBER	NOMENCLATURE 1234567	EFF CODE	QTY PER ASSY
01-					
-1	257T2201-1		DELETED		
-1A	257T2201-3		DELETED		
-1B	257T2201-6		DELETED		
-1C	257T2201-8		DELETED		
-1D	257T2201-11		MODULE ASSY-LG BRAKE METERING VALVE (PRE SB 32-81)	A	RF
-1E	250T1003-3		MODULE ASSY-LG BRAKE METERING VALVE (POST SB 32-81)	E	RF
-1F	257T2201-21		MODULE ASSY-LG BRAKE METERING VALVE (POST SB 32-81)	I	RF
-3	257T2201-15		MODULE ASSY-LG BRAKE METERING VALVE (PRE SB 32-81)	B	RF
-3A	250T1003-5		MODULE ASSY-LG BRAKE METERING VALVE (POST SB 32-81)	F	RF
-3B	257T2201-23		MODULE ASSY-LG BRAKE METERING VALVE (POST SB 32-81)	J	RF
-5	257T2201-2		DELETED		
-5A	257T2201-4		DELETED		
-5B	257T2201-7		DELETED		
-5C	257T2201-9		DELETED		
-5D	257T2201-16		MODULE ASSY-LG BRAKE METERING VALVE (PRE SB 32-81)	C	RF
-5E	250T1003-4		MODULE ASSY-LG BRAKE METERING VALVE (POST SB 32-81)	G	RF
-5F	257T2201-22		MODULE ASSY-LG BRAKE METERING VALVE (POST SB 32-81)	K	RF
-7	257T2201-14		MODULE ASSY-LG BRAKE METERING VALVE (PRE SB 32-81)	D	RF
-7A	250T1003-2		MODULE ASSY-LG BRAKE METERING VALVE (POST SB 32-81)	H	RF
-7B	257T2201-24		MODULE ASSY-LG BRAKE METERING VALVE (POST SB 32-81)	L	RF

32-41-01

ILLUSTRATED PARTS LIST
01.1 Page 1011
Jan 01/93

FIG. & ITEM	PART NO.	AIRLINE PART NUMBER	NOMENCLATURE 1234567	EFF CODE	QTY PER ASSY
01-10	274T4570-1		DELETED		
10A	274T4570-2		.ACTUATOR ASSY-DESPIN (FOR DETAILS SEE 32-41-25) ATTACHING PARTS	BCFGJ K	1
15	BACB30NF4H26		DELETED		
15A	BACB30NF4H28		DELETED		
15B	BACB30NF4H24		.BOLT	BCFGJ K	4
20	AN960PD416		.WASHER	BCFGJ K	4
25	NAS43DD4-89		DELETED		
25A	NAS43DD4-98		DELETED		
25B	NAS43DD4-86		.SPACER	BCFGJ K	4
			-----*		
30	NAS6604-38		.BOLT		3
35	AN960PD416		.WASHER		1
40	AN960PD416L		.WASHER		2
45	257T2201-5		.VALVE ASSY	ACDEG HIKL BFJ	1
45A	257T2201-20		.VALVE ASSY		1
50	MS21916D10-8		DELETED		1
50A	MS21916D10-6		..REDUCER (USED ON ITEM 45)		1
50B	BACR17E10-8		..REDUCER (USED ON ITEM 45A)		1
55	NAS1612-10		..PACKING		1

32-41-01

 ILLUSTRATED PARTS LIST
 01.1 Page 1012
 Jan 01/93

 **BOEING**
COMPONENT
MAINTENANCE MANUAL

FIG. & ITEM	PART NO.	AIRLINE PART NUMBER	NOMENCLATURE 1234567	EFF CODE	QTY PER ASSY
01-60	AFP2328-6		..REDUCER (V30974) (SPEC BACR17E8-6) (OPT AP10278-6 (V01673)) (OPT BC916T8-6 (V50948)) (OPT DBOR17E8-6 (V14798)) (OPT ER21916T8-6 (V17498)) (OPT ER31916-8-6 (V17498)) (OPT F23-8-6 (V73197)) (OPT 2-01075T8-6 (V11328)) (OPT 31778-8-6 (V14397))		2
65	NAS1612-8		..PACKING		2
70	60B00219-4		DELETED		
70A	40250-10030		..VALVE ASSY- (VS4802) (SPEC 60B00219-4)		1
75	NAS6604-13		.BOLT		2
80	NAS6604-15		DELETED		
85	AN960PD416L		.WASHER		4
90	H10-4BAC		.NUT (V15653) (SPEC BACN10JC4) (OPT NS202101-048 (V80539)) (OPT RMLH9075-4W (V72962)) (OPT T6S428J (V11815)) (OPT VN303A048 (V92215)) (OPT 96-048 (V80539)) (OPT BRH10A4 (V52828))		2
95	69B81787-9		.ROD ASSY-CONNECTING		1

32-41-01

ILLUSTRATED PARTS LIST
01.101 Page 1013
Jan 01/93

FIG. & ITEM	PART NO.	AIRLINE PART NUMBER	NOMENCLATURE 1234567	EFF CODE	QTY PER ASSY
01-100	REP4M6-4FS428		..BEARING (V21335) (SPEC BACB10AD5K) (OPT HHRE4MS6-1 (V38443)) (OPT REP4M6-4E9171B (V21335)) (OPT ITEM 100A)		1
-100A	BACB10A446H		..BEARING- (OPT ITEM 100)		1
105	REP4ML6-4FS428		..BEARING (V21335) (SPEC BACB10AD5LK) (OPT HHRE4MLS6-1 (V38443)) (OPT REP4ML6-4E9171B (V21335)) (OPT ITEM 105A)		1
-105A	REP4ML6-4E91715		..BEARING- (V21335) (OPT ITEM 105)		1
110	NAS509-6		..NUT		1
115	NAS509L6		..NUT		1
120	NAS1193-6-1		..LOCKING DEVICE		2
125	NAS1193-6-2		..LOCKING DEVICE		2
130	69B81787-10		..ROD		1
135	69B81793-2		DELETED		
140	MS24665-304		.PIN-COTTER		1
145	BACN10JD108		.NUT (V15653) (SPEC BACN10JD108) (V56878,V72962,V92595, V72962,V92595)		1
150	AN96OPD816		.WASHER		1
155	MS24665-372		.PIN-COTTER		1
160	BACN10JD110		.NUT (V15653) (SPEC BACN10JD110) (V56878, V72962, V92595))		1

32-41-01

 ILLUSTRATED PARTS LIST
 01.101 Page 1014
 Jan 01/93

BOEING
COMPONENT
MAINTENANCE MANUAL

FIG. & ITEM	PART NO.	AIRLINE PART NUMBER	NOMENCLATURE 1234567	EFF CODE	QTY PER ASSY
01-					
165	AN960PD1016		DELETED		
170	257T2213-1		DELETED		
170A	257T2225-1		.LEVER		1
175	NAS43HT12-43		.SPACER		1
180	257T2217-7		.RETAINER-BRG		1
			ATTACHING PARTS		
185	NAS6604-2		DELETED		2
185A	BACB30NF4-2		.BOLT (V06710) (SPEC BACB30NF4-2) (OPT BACB30NF4-2 (V06725,V06950,V08524, V17943,V27624,V56878, V80539,V92215,V97928)		2
190	AN960PD416L		.WASHER		4
195	H10-4BAC		.NUT (V15653) (SPEC BACN10JC4) (SEE ITEM 90 FOR OPT PARTS)		2
			-----*		
200	MB539DD		DELETED		
200A	B539DD		.BEARING (OPT) (V38443) (SPEC BACB10CF12PP) (OPT B539-2TS (V43991)) (OPT B539DDFS428 (V21335)) (OPT B539SSG27 (V30163))		2
-200B	BACB10FU12		.BEARING (PREF)		2
205	NAS43HT12-97		DELETED		
205A	NAS43HT12-94		.SPACER		1
210	65B81896-4		.SHAFT (PRE SB 32-81)	A-D	1
-210A	65B81896-2		.SHAFT (POST SB 32-81)	E-L	1
215	MS24665-304		.PIN-COTTER		1
220	BACN10JD108		.NUT (V15653) (SPEC BACN10JD108) (SEE ITEM 145 FOR OPT)		1

32-41-01

ILLUSTRATED PARTS LIST
01.1 Page 1015
Jan 01/93

FIG. & ITEM	PART NO.	AIRLINE PART NUMBER	NOMENCLATURE 1234567	EFF CODE	QTY PER ASSY
01-					
225	AN960PD816		.WASHER		1
230	MS24665-372		.PIN-COTTER (PRE SB 32-81)	A-D	1
-230A	MS24665-374		.PIN-COTTER (POST SB 32-81)	E-L	1
235	BACN10JD110		.NUT (V15653) (SPEC BACN10JD110) (SEE ITEM 160 FOR OPT)		1
240	69B81792-2		.BUSHING		1
245	NAS6604-16		.BOLT		1
250	AN960PD416		.WASHER		1
255	H10-4BAC		.NUT (V15653) (SPEC BACN10JC4) (SEE ITEM 90 FOR OPT)		1
260	257T2219-1		.CRANK- (OPT ITEM 260A)		1
-260A	257T2216-1		.CRANK- (OPT ITEM 260)		1
265	69B81794-3		DELETED		
-265A	69B81794-4		DELETED		
270	NAS43HT12-43		.SPACER		1
275	257T2217-7		.RETAINER-BRG ATTACHING PARTS		1
280	NAS6604-2		.BOLT		2
285	AN960PD416L		.WASHER		4
290	H10-4BAC		.NUT (V15653) (SPEC BACN10JC4) (SEE ITEM 90 FOR OPT)		2
			-----*		
295	MB539DD		DELETED		2
295A	B539DD		.BEARING (OPT) (V38443) (SPEC BACB10CF12PP) (FOR OPTIONAL PARTS REFER TO ITEM 200A)		2
-295B	BACB10FU12		.BEARING (PREF)		2

32-41-01

 ILLUSTRATED PARTS LIST
 01.1 Page 1016
 Jan 01/93

BOEING
COMPONENT
MAINTENANCE MANUAL

FIG. & ITEM	PART NO.	AIRLINE PART NUMBER	NOMENCLATURE 1234567	EFF CODE	QTY PER ASSY
01-297	BACW10P237S		.WASHER (V10630) (SPEC BACW10P237S)		1
298	NAS6604-19		.BOLT		2
299	AN960PD416		.WASHER		2
300	257T2212-3		.QUADRANT ASSY		1
305	BACR15BA4AD		..RIVET- (SIZE DETERMINE ON INST)		2
310	NAS42DD4-13		..SPACER		2
315	257T2212-4		..QUADRANT		1
320	65B81896-3		DELETED		1
320A	65B81896-5		.SHAFT (PRE SB 32-81)	A-D	1
-320B	65B81896-9		.SHAFT (POST SB 32-81)	E-L	1
325	NAS73-3E205		.BUSHING	ACEGI K	1
330	HL18PB6-39		.BOLT (V56878) (SPEC BACB30FM6-39) (OPT HL18PB6-39 (V73197, V92215, V97928) (OPT 62550-6-39 (V56878)) (OPT HL18PB6-39 (V80539))	ACEGI K	1
335	AN960PD10		.WASHER	ACEGI K	1
340	HL79-6		.COLLAR (V56878) (SPEC BACC30M6) (OPT HL79-6 (V73197)) (OPT HL79-6 (V92215)) (OPT 66014-6 (V56878))	ACEGI K	1
345	257T2202-1		DELETED		
-345A	257T2202-3		DELETED		
345B	257T2202-5		DELETED		
-345C	257T2202-7		DELETED		
345D	257T2202-11		DELETED		

32-41-01

ILLUSTRATED PARTS LIST
01.1 Page 1017
Jan 01/93

FIG. & ITEM	PART NO.	AIRLINE PART NUMBER	NOMENCLATURE 1234567	EFF CODE	QTY PER ASSY
01-					
-345E	257T2202-9		DELETED		
345F	257T2202-13		.HOUSING ASSY (OPT ITEM 345G)	AEI	1
-345G	257T2202-17		.HOUSING ASSY (OPT ITEM 345F)	AEI	1
-347	257T2202-15		.HOUSING ASSY- (OPT ITEM 347A)	BFJ	1
-347A	257T2202-19		.HOUSING ASSY- (OPT ITEM 347)	BFJ	1
-350	257T2202-2		DELETED		
-350A	257T2202-4		DELETED		
-350B	257T2202-6		DELETED		
-350C	257T2202-8		DELETED		
-350D	257T2202-12		DELETED		
-350E	257T2202-10		DELETED		
-350F	257T2202-14		.HOUSING ASSY (OPT ITEM 350G)	CGK	1
-350G	257T2202-18		.HOUSING ASSY (OPT ITEM 350F)	CGK	1
-352	257T2202-16		.HOUSING ASSY (OPT ITEM 352A)	DHL	1
-352A	257T2202-20		.HOUSING ASSY (OPT ITEM 352)	DHL	1
355	257T2224-3		..FITTING ASSY-STRUT ATTACHING PARTS		1
360	HL448UC8-6		..BOLT (V56878) (SPEC BACB30MB8A6) (OPT HL448UC8-6 (V73197)) (OPT HL448UC8-6 (V92215)) (OPT HL448UC8-6 (V97928)) (OPT 69308-8A6 (V56878)) (OPT HL448UC8-6 (V80539))		2

32-41-01

 ILLUSTRATED PARTS LIST
 01.1 Page 1018
 Jan 01/93

BOEING
COMPONENT
MAINTENANCE MANUAL

FIG. & ITEM	PART NO.	AIRLINE PART NUMBER	NOMENCLATURE 1234567	EFF CODE	QTY PER ASSY
01-365	HL1187DUW8		..COLLAR (V73197) (SPEC BACC30X8SW) (OPT HL87DUW8 (V73197)) (OPT HL87DUW8 (V92215)) (OPT HL1187DUW8 (V56878)) (OPT HL1187DUW8 (V92215)) (OPT HL87DUW8 (V56878)) -----*		2
370	HT04VSBC		...BEARING (V50294) (SPEC BACB10FC04C) (OPT NRRS04B10GC (V73134)) (OPT ADB4VNC (V15860)) (OPT KNDB4-66 (V97613)) (OPT KR4CNGBZC (V50632))		1
375	257T2224-4		...FITTING-STRUT		1
380	BACR15BB4AD		..RIVET- (SIZE DETERMINE ON INST)		5
385	HL448UC6-6		..BOLT (V56878) (SPEC BACB30MB6A6) (OPT HL448UC6-6 (V73197)) (OPT HL448UC6-6 (V92215)) (OPT HL448UC6-6 (V97928)) (OPT 69308-6A6 (V56878)) (OPT HL448UC6-6 (V80539))		2

32-41-01

ILLUSTRATED PARTS LIST
01.101 Page 1019
Jan 01/93

FIG. & ITEM	PART NO.	AIRLINE PART NUMBER	NOMENCLATURE 1234567	EFF CODE	QTY PER ASSY
01-390	HL1187DUW6		..COLLAR (V73197) (SPEC BACC30X6SW) (OPT HL87DUW6 (V73197)) (OPT HL87DUW6 (V92215)) (OPT HL1187DUW6 (V56878)) (OPT HL1187DUW6 (V92215)) (OPT HL87DUW6 (V56878))		2
395	257T2218-9		..SUPPORT (USED ON ITEMS 345F, 345G)		1
-395A	257T2218-7		..SUPPORT (USED ON ITEMS 347, 347A)		1
-400	257T2218-10		..SUPPORT (USED ON ITEMS 350F, 350G)		1
-400A	257T2218-8		..SUPPORT (USED ON ITEMS 352, 352A)		1
405	257T2217-10		..GUSSET- (USED ON ITEMS 345G, 350G)		2
-405A	257T2217-6		..GUSSET- (USED ON ITEMS 347A, 352A)		2
-405B	257T2217-27		..GUSSET- (USED ON ITEMS 345F, 347, 350F, 352)		2
407	257T2217-28		..GUSSET- (USED ON ITEMS 345F, 347, 350F, 352)		2
410	257T2217-9		..GUSSET (USED ON ITEMS 345G, 350G)		1
-410A	257T2217-5		..GUSSET (USED ON ITEMS 347A, 352A)		1

32-41-01

 ILLUSTRATED PARTS LIST
 01.1 Page 1020
 Jan 01/93



BOEING
COMPONENT
MAINTENANCE MANUAL

FIG. & ITEM	PART NO.	AIRLINE PART NUMBER	NOMENCLATURE 1234567	EFF CODE	QTY PER ASSY
01-412	257T2217-24		..GUSSET (USED ON ITEMS 345G, 350G)		1
-414	257T2217-23		..GUSSET (USED ON ITEMS 347A, 352A)		1
415	BACR15BB5AD		..RIVET- (SIZE DETERMINE ON INST)		27
417	BACR15BB5AD		..RIVET- (SIZE DETERMINE ON INST) (USED ON ITEMS 345G, 347A, 350G, 352A)		2
420	257T2217-8		..CLIP		1
425	257T2217-15		..CLIP ATTACHING PARTS		1
430	BACR15BB5AD		..RIVET- (SIZE DETERMINE ON INST) -----*-----		12
435	257T2222-1		..SPACER (USED ON ITEMS 345F, 345G,350F,350G)		2
440	257T2222-2		..SPACER (USED ON ITEMS 347, 347A,352,352A)		1
445	257T2222-1		..SPACER (USED ON ITEMS 347, 347A,352,352A) ATTACHING PARTS		1
450	BACR15BB4AD		..RIVET- (SIZE DETERMINE ON INST) -----*-----		4
455	NS202440-048		..NUTPLATE (V80539) (SPEC BACN10KB4CD) (OPT 102A9207P4 (V72962)) (OPT K51595-4 (V15653)) (OPT ITEM 455A)		1

32-41-01

FIG. & ITEM	PART NO.	AIRLINE PART NUMBER	NOMENCLATURE 1234567	EFF CODE	QTY PER ASSY
01- -455A	BR1000C4		..NUTPLATE (V52828) (SPEC BACN10KB4C) (OPT T8111C428 (V11815)) (OPT VN101B1-048 (V92215)) (OPT 101A9207-4 (V72962)) (OPT K2031-4 (V15653)) (OPT K2031-4 (V15653)) (OPT ITEM 455) ATTACHING PARTS		1
460	BACR15BA3AD		..RIVET- (SIZE DETERMINE ON INST) -----*		2
465	257T2218-12		..SUPPORT (USED ON ITEMS 345F, 345G,350F,350G)		1
-465A	257T2218-11		..SUPPORT (USED ON ITEMS 347, 347A,352,352A)		1
471	BACR15BA4AD		..RIVET- (SIZE DETERMINE ON INST)		8
475	BACR15BB5AD		..RIVET- (SIZE DETERMINE ON INST)		12
480	BACR15BA3AD		..RIVET- (SIZE DETERMINE ON INST)		12
485	257T2217-3		..BRACKET (USED ON ITEMS 345F, 345G,347,347A)		1
-485A	257T2217-4		..BRACKET (USED ON ITEMS 350F, 350G,352,352A)		1
490	BRFM20C4MD		..NUTPLATE (V52828) (SPEC BACN10JN4CD) (OPT 102F9201M4 (V72962)) (OPT NS202487-048 (V80539)) (OPT MF51637-4 (V15653))		6

32-41-01

 ILLUSTRATED PARTS LIST
 01.1 Page 1022
 Jan 01/93

BOEING
COMPONENT
MAINTENANCE MANUAL

FIG. & ITEM	PART NO.	AIRLINE PART NUMBER	NOMENCLATURE 1234567	EFF CODE	QTY PER ASSY
01-					
495	NAS1195DD4WH		..SHIM		2
500	257T2217-16		..SHIM		2
505	257T2217-13		..BRACKET (USED ON ITEMS 345F, 345G,347,347A)		1
-505A	257T2217-14		..BRACKET (USED ON ITEMS 350F, 350G,352,352A)		1
510	257T2214-6		..HOUSING-BRG (USED ON ITEMS 345F, 345G,347,347A)		1
-510A	257T2214-7		..HOUSING-BRG (USED ON ITEMS 350F, 350G,352,352A)		1
515	HL440UC6-6		DELETED		
515A	NA6603-3		DELETED		
515B	NAS6603-3		DELETED		
520	AN960PD10		DELETED		
520A	AN960PD10L		DELETED		
525	BACW10P44AL		DELETED		
530	NAS42DD6-10		DELETED		
530A	NAS43DD3-12		DELETED		
530B	NAS42DD6-12		DELETED		
535	HL79-6		DELETED		
535A	BRH10-3		DELETED		
540	BACR15BB4AD		..RIVET- (SIZE DETERMINE ON INST)		11
542	BACR15BB4AD		..RIVET- (SIZE DETERMINE ON INST) (USED ON ITEMS 345F, 345G,350F,350G)		1
-543	BACR15BA4AD		..RIVET (SIZE DETERMINE ON INST) (USED ON ITEMS 347,347A, 352,352A)		1
545	BACR15BB5AD		..RIVET- (SIZE DETERMINE ON INST)		12
550	257T2217-11		..BRACKET (USED ON ITEMS 345F, 345G,347,347A)		1

32-41-01

ILLUSTRATED PARTS LIST
01.1 Page 1023
Jan 01/93

FIG. & ITEM	PART NO.	AIRLINE PART NUMBER	NOMENCLATURE 1234567	EFF CODE	QTY PER ASSY
01-					
-550A	257T2217-12		..BRACKET (USED ON ITEMS 350F, 350G,352,352A)		1
555	257T2217-1		DELETED		
-555A	257T2217-2		DELETED		
555B	257T2217-25		..BRACKET (USED ON ITEMS 345F, 345G,347,347A)		1
-555C	257T2217-26		..BRACKET (USED ON ITEMS 350F, 350G,352,352A)		1
560	257T2214-3		..HOUSING-BRG		1
565	257T2214-5		..HOUSING-BRG		1
570	257T2218-4		..SUPPORT (USED ON ITEM 345G)		1
-570A	257T2218-13		..SUPPORT (USED ON ITEM 350G)		1
-575	257T2218-2		..SUPPORT- (USED ON ITEMS 347A, 352A)		1
-575A	257T2218-15		..SUPPORT- (USED ON ITEMS 345F, 347, 350F, 352)		1
580	257T2218-3		..SUPPORT- (USED ON ITEM 345G)		1
-580A	257T2218-1		..SUPPORT- (USED ON ITEM 347A)		1
-585	257T2218-6		..SUPPORT- (USED ON ITEM 350G)		1
-585A	257T2218-5		..SUPPORT- (USED ON ITEM 352A)		1
-585B	257T2218-14		..SUPPORT- (USED ON ITEMS 345F, 347, 350F, 352)		1
590	BAC27ECT43		.MARKER-NORMAL	ADEHI L	1
595	BAC27ETC44		DELETED		
595A	BAC27ECT44		.MARKER-ALTERNATE	BCFGJ K	1
600	257T2226-1		.SPRING		1
605	NAS6604-34		.BOLT		1
610	AN960PD416		.WASHER		1
615	AN960PD416L		.WASHER		AR

32-41-01

 **BOEING**
COMPONENT
MAINTENANCE MANUAL

FIG. & ITEM	PART NO.	AIRLINE PART NUMBER	NOMENCLATURE 1234567	EFF CODE	QTY PER ASSY
01-					
620	NAS43DD4-47		.SPACER		1
625	NAS43DD4-55		.SPACER		1
630	HL10VAZ8-12		.BOLT (V56878) (SPEC BACB30MY8K12) (OPT B30MY8K12 (V97928)) (OPT HL10VAZ8-12 (V73197)) (OPT HL10VAZ8-12 (V92215)) (OPT HL10VAZ8-12 (V97928)) (OPT L8008K12 (V06725))		1
635	AN960PD416		.WASHER		1
640	H10-4BAC		.NUT (V15653) (SPEC BACN10JC4) (SEE ITEM 90 FOR OPT)		2
645	257T2228-1		.BUSHING		2
650	257T2227-1		.BRACKET ASSY		1
655	BACR15BA3AD		..RIVET- (SIZE DETERMINE ON INST)		4
660	T8124S4S		..NUTPLATE (V11815) (SPEC BACN10JN4) (OPT BRFM20A4 (V52828)) (OPT MF1000-4BAC (V15653)) (OPT NS103218-048 (V80539)) (OPT VN252A048 (V92215))		2
665	257T2227-2		..BRACKET		1

32-41-01

ILLUSTRATED PARTS LIST
01.101 Page 1025
Jan 01/93